

Hotel development in **China**

Ritz-Carlton Sanya Resort



Design concept

As one of the final and most picturesque properties in Yalong Bay, the Ritz-Carlton Sanya Resort will be acknowledged as the most elegant on Hainan Island and will surpass the world-class resorts of Southeast Asia. With its proximity to Mainland China and many major Asian cities, it will be considered a prime destination for leisure, conference and other holiday functions. The proposed project will include a world-class hotel, conference centre, hotel villas, private villas and a spa of unparalleled distinction. The purpose of the design is to develop a state-of-the-art resort that blends harmoniously with the natural beauty of Hainan and reflect the

culturally rich and diverse heritage of China and Southeast Asia.

On the island of Hainan, the Ritz-Carlton project is situated in Yalong Bay, 28 kilometres from Sanya City and fronting a 500-metre long white sand beach and the clear blue South China Sea, the site is bordered by the natural red forest reserve and lagoon to the northeast and a championship golf course to the northeast. Immediately adjacent and integrated with the design is the Hilton Sanya Resort. The scenic quality of this site lends itself to a peaceful, tranquil life style that is the essence of Chinese culture. The pursuit of a harmony between nature and the built environment underscores the design effort.



of the entire resort and a dramatic panorama of the beach, sea and sky. Clustered within a grouping of Asian inspired pavilions is the conference centre that will serve the requirement of any international organization. The arrangement of Asian pavilions is evident in the main hotel area that includes the main lobby, lobby lounge, Chinese restaurant and lobby bar. A grand pair of steps descends alongside a pool of water to the garden and restaurant level of the resort. Covered walkways provide shaded access for the guest to the two hotel wings.



The luxurious guestrooms are carefully placed near the east and west property boundaries. At four levels, the guestroom wings capture the spectacular views of the resort, the natural reserve and the sea, yet remain a visually comfortable scale. The western guestroom wing benefit from a serene and comfortable inner courtyard. Guestrooms are oriented to maximize sea views and to enhance multiple views of the natural reserve, golf course and surrounding hillsides. An unattached presidential suite is prominently placed on the top floor and at the end of the eastern wing, affording a commanding perspective of the entire beach and sea.

The resort will feature both hotel and private villas in both phases of development. The hotel villas are reminiscent of the picturesque water pavilions of China, drawing additional inspiration from the memorable water bungalows seen throughout all of Southeast Asia. The one bedroom private villas are positioned carefully to ensure secluded and intimate views to lush landscaped gardens and crystal clear

On arrival to the resort, the guest is led by a gently rising and meandering entry road. Surrounding the road is a natural field spotted with tropical trees and accentuated by a pair of Asian landscape sculptures. Upon entering the refined arrival court, the guest is greeted by a tranquil reflecting pool and a shaded porte cochere. A framed vista through an entry portal draws the guest into the hotel and provides a dramatic surprise prior to their reception.

At the centerpiece of the resort, the main hotel is positioned near the northern boundary of the site and elevated above the surrounding natural landscape. The hotel public spaces will have a stunning overview

Lagoon pool





masterplan



lagoons. The most luxurious two bedroom private beachfront villa has been positioned to allow for direct views and access to the stunning white sand beach and clear blue sea. Within this private two-bedroom villa compound guests or owners may enjoy relaxing on the expansive terrace or taking a refreshing swim in their own private pool.

The world-class spa has been designed to provide a complete range of experiences and treatments for guests. As the guest enters the spa compound they transition through a series of pavilions and spaces floating above tranquil reflecting pools. The spa enclave consists of individual pavilions grouped around a central core housing luxurious men's and women's treatment rooms and locker facilities. Once guests are escorted to their private spa suite they are presented with an unparalleled view to the sea. It is at this interchange between the natural beauty of the site and through the perfect orientation and venue of the architecture that

one is transcended beyond the typical spa experience.

Integral to the project design is the water based landscape concept reminiscent of the great resort gardens of Asia. The resort plan is also rich with overtones of Southern Chinese garden design. The arrangement of landscape spaces and water elements coexist, with an emphasis on sequential discoveries, an axial and intricate alignment of spaces and stunning framed panoramas of the hillside, natural red forest and the horizon. Water, indigenous hardscape and native plants will be presented in both traditional and contemporary styles that reflect the merging of both Chinese and Southeast Asian influences. There are also whimsical and undulating landscape elements such as the sculptured lawn and lotus maze which impart an interesting contrast to the resort's more formal spaces. Furthermore, the project's design incorporates an expansive natural field at its entry aimed at enhancing the views to and from the neighboring Hilton Sanya site.

The overall architecture language is based on interpretation of traditional Chinese and Southeast Asian architecture. Simplified roof lines, reduced details, occasional use of traditional profiles and the use of local materials will compliment modern building construction to offer a taste of the past with the most updated comfort and convenience. The intent is to capture the timeless quality of traditional architecture that blends in with natural environment in an effortless way.

Paramount to the design for the Ritz-Carlton Sanya Resort is the objective to uphold the Ritz-Carlton standard both in the use of luxurious architectural materials and design elements. The focus of this design concept has been to create a five-star, world-class destination resort with international appeal.

Interior design

Lobby

The semi-open space distorts the transition between interior and exterior. The interior therefore lies synonymous with the architectural shell with the repetition of tie beams and decorative timber framework on the ceiling. The Reception and Concierge are separated into two zones for two reasons. It highlights the emphasis of the horizontal axis in Chinese architectural planning and



it also promotes the smooth circulation of pedestrian traffic.

The sheer scale of the pitched roof brought together with the exposed structural elements of the building provides a sense of strength and a touch of ancient Chinese grandeur at the entrance. As the eye is drawn downward by the four massive central columns, the focal point water feature comes into view. The gentle resonance of flowing water calms the senses as it makes its way down a set of tiered surfaces resembling floating lily pads.

Lobby Lounge

Surrounded by a pool of water and lit up with the glow of submerged candles by night, the Lobby Lounge is a Chinese Pavilion isolated from the main corridor for a place to provide



Pearl Private Room



Private Room

shade and rest. With the exception of the Tea Lounge and Bar, and in the true sense of a 'pavilion', the covered structure has timber and glass bi-fold doors that open the space to allow the best view in the resort to flood into the space. A combination of glass, silky walnut, natural and split stone are used to form part of the bar joinery. The idea of which is to integrate materials of the natural environment into the design. As an informal setting, a blend of contemporary outdoor furniture compliments this space chosen for their subtle blend of curved volumes and geometry.

All Day Dining

Aptly suited to the casual dining experience that 'Fresh 8' offers; a concept of a 'refreshing seaside breeze' was developed. This was achieved through a visual effect of overlapping fans shapes radiating from the heart of the ceiling space. To reinforce this effect and to give the impression of moving air, a layer of curved bronze metal rods permeates the space above the fans.

Directly beneath the fan, the feature marble, Rainforest Brown is organized in a concentric 'cracked' pattern to highlight the seafood and sushi display counters. A tranquil water feature with oversized lanterns hung from the ceiling above encompasses the main dining area, which is raised on a timber deck. Semi-private dining areas at the wings of the space with full height retractable doors allow these spaces to be integrated into the main dining experience.

In complimenting the interior architecture, the materials need to 'breathe' and were kept natural with the use of a light coloured timber veneer and laminated glass panels with woven rattan fiber hand crafted by the local Hainanese.



Pearl Interior



1-bedroom Villa bedroom

Landscape design

The Ritz-Carlton, Sanya is a luxury resort hotel, set within a pristine white sand and blue water beachfront site on the tropical Hainan Island, China. Belt Collins' combined Thailand and Singapore Office design teams worked closely with design architects WATG, to achieve the owners' vision of contemporary Asian style, set in a unique natural setting with the Yalong Bay on one side and uninterrupted views of the nearby rainforest and mangrove swamp on the other. A mixture of traditional artwork and naturalistic features compliments the crisp



3-bedroom Villa Jacuzzi



Lotus Pond



Villa Path

clean lines of the resort's contemporary landscape. Guests staying at the hotel's 450 rooms and suites are offered the opportunity of relaxation, freedom and inspiration. Each of the 20 private pool villas has been sensitively detailed with feature stone-walls, beachfront timber decks and intimate infinity pools that merge with the horizon, creating a setting of secluded privacy.

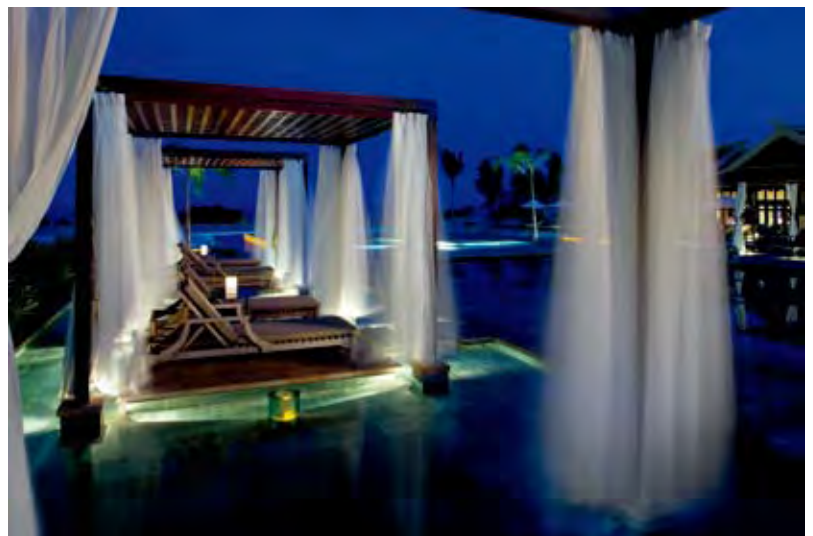
The resort's beachfront location and the distinctive landscape character of the nearby mangrove swamp were the inspiration for Belt Collins' design concept for the landscape, which is centered on creating innovative opportunities for interacting with water. This theme is introduced with the large reflective pool at the main entry, flanked by large pools with bubblers on either side. This first impression is enhanced by the spectacular ocean view that greets visitors at the reception lobby, visually establishing a close connection to water. Throughout the resort, courtyards dotted with water features are gentle reminders of the theme. While the beachfront pool and deck create an expansive interaction with the water, sun and sand, the lagoon and creek pools provide a more intimate water experience.

The crisp lines of the architecture and landscape layout are interspersed with undulating water bodies and pathways, accentuated with feature flowering trees and plants. Wherever possible, the





Outdoor Spa in villa



Front Pool

intersection of architectural and landscape elements has been highlighted through the use of texture, especially near water. The use of rich texture in stone finishes, for the pools, feature walls and water features, subtly imparts each area with its own distinct identity and character. The spa facility, the largest in the region, has been designed and operated by ESPA. The landscape for the spa and treatment areas is based on the concept of the five Chinese elements (metal element, wood element, water element, fire element and the earth element). The resort also houses a wedding chapel, resting on a reflective pool. During the day, the chapel commands spectacular views out to the ocean, seemingly floating

on the pool and the continuous line of water till the horizon. At night, flames from the fire bowls around it are reflected dramatically on the surface of the pool water, transforming the chapel into an unforgettable setting.

Dramatically up lit trees, local stone clad walls, reflective pools, fire bowls, water features and the beachfront infinity edge swimming pool are all memorable features of the resort. The landscape experience of the unique tropical beauty of Sanya has been extended beyond the boundary of the Ritz Carlton to the natural surroundings through various guest activities like trekking, mountain climbing, island safari, rock-climbing, and scuba diving opportunities.



Fast Facts

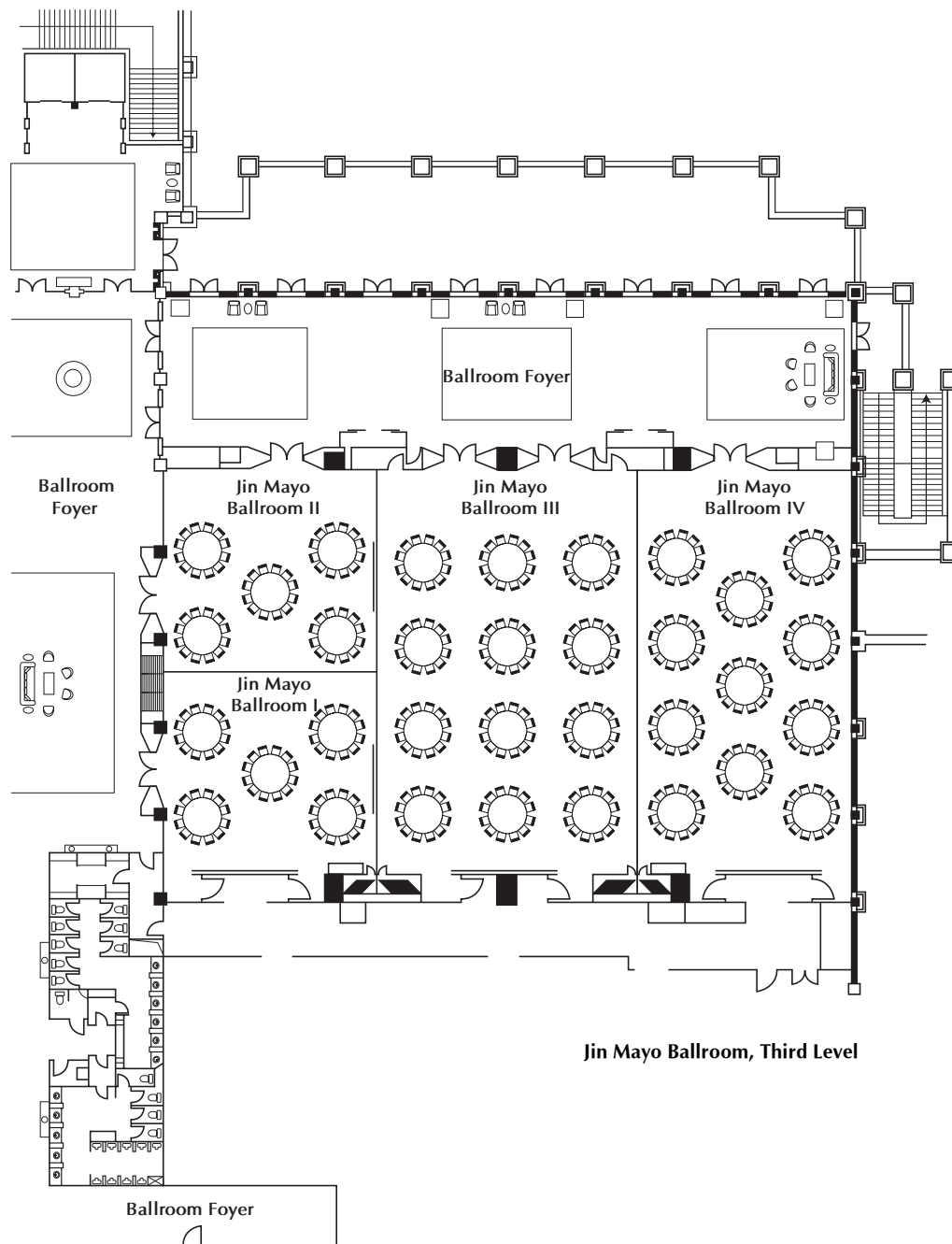
| | |
|-------------------------------|--------------------------------------|
| site area | 153,375 sq m |
| FAR | 0.39 |
| site coverage ratio (Density) | 15.1% |
| landscape coverage | 45% (63.6% including water features) |
| total GFA | 74,588 sq m |
| building footprint area | 23,159 sq m |
| number of stories | 7 |
| number of guestrooms | 450 (417 rooms + 33 villas) |
| number of car-parking spaces | 110 |
| building height | 24.4 m (7 floors) |
| opening date | 25 April 2008 |

Area breakdown

| | |
|---|-------------|
| accountable GFA (hotel facilities & amenities) | 27,082 sq m |
| guest rooms | 43,022 sq m |
| villa (x 2) | 4,959 sq m |
| non-accountable GFA e&m plant/ basement car-parking | 4,484 sq m |
| aggregate total | 79,547 sq m |

Time schedule

| | |
|-----------------------|-----------|
| design, documentation | 11 months |
| construction | 23 months |



Jin Mayo Ballroom, Third Level

client
Shanghai JinMao Consultants Ltd

design architect
WATG

structural engineer
Shanghai Design Institute

services engineer
Shanghai Design Institute

interior design
Chhada, Siembieda & Associates

F&B design
Chhada, Siembieda & Associates

landscape design
Belt Collins International (Singapore) Pte Ltd

lighting design
(PLD) Project Lighting Design

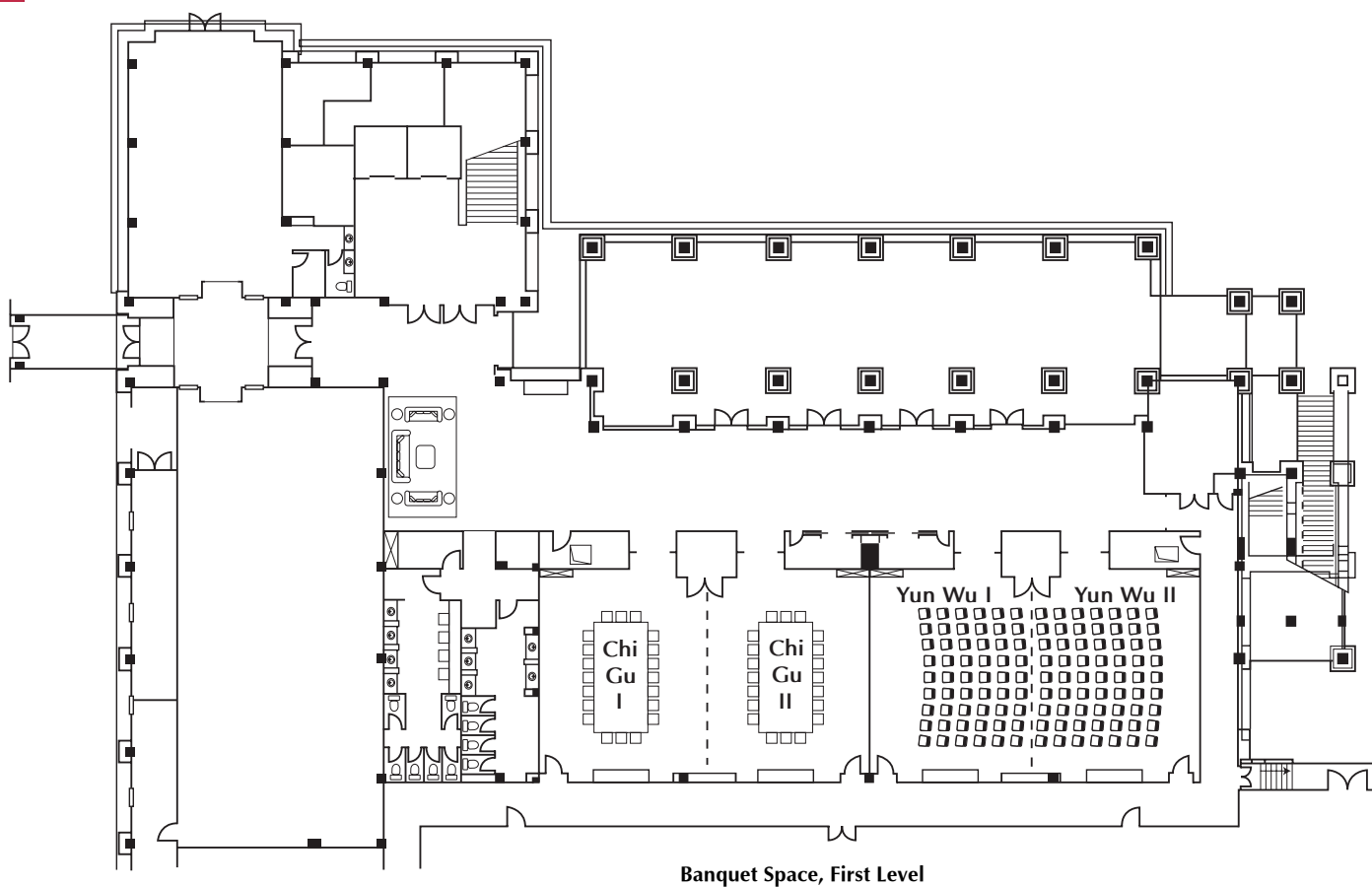
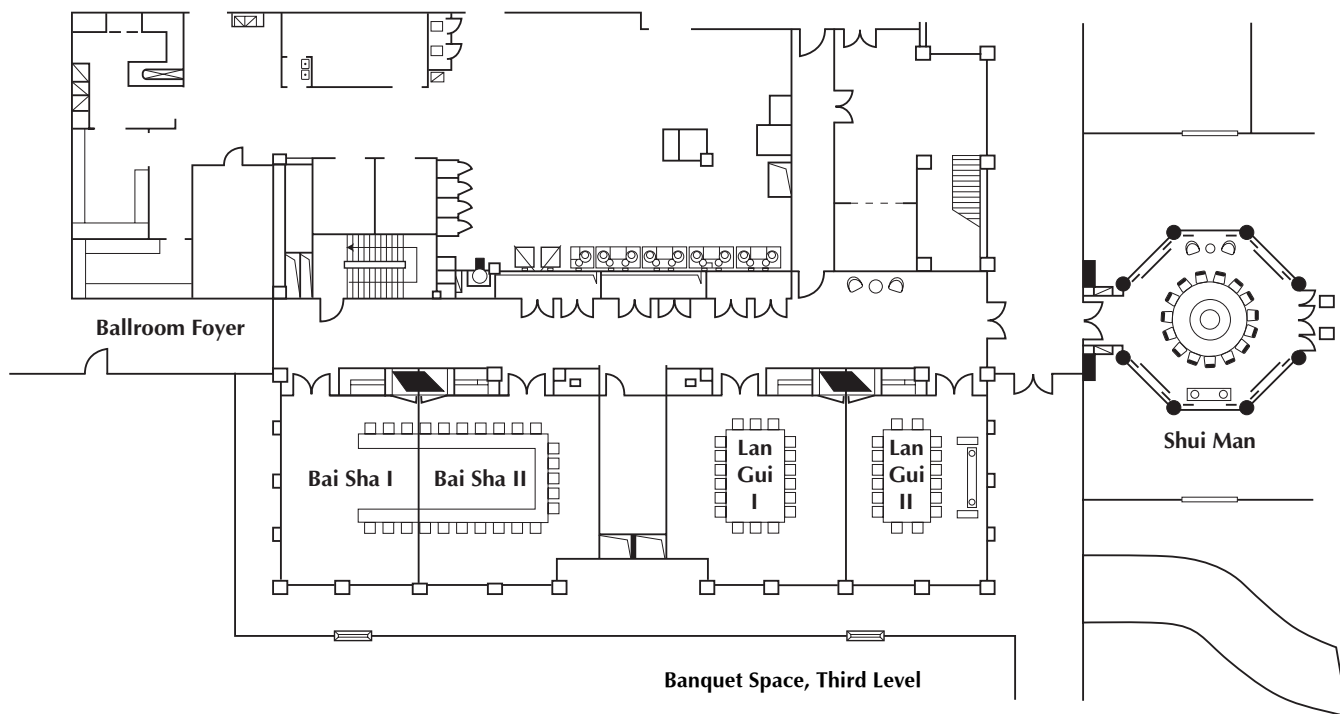
spa consultant
ESPA

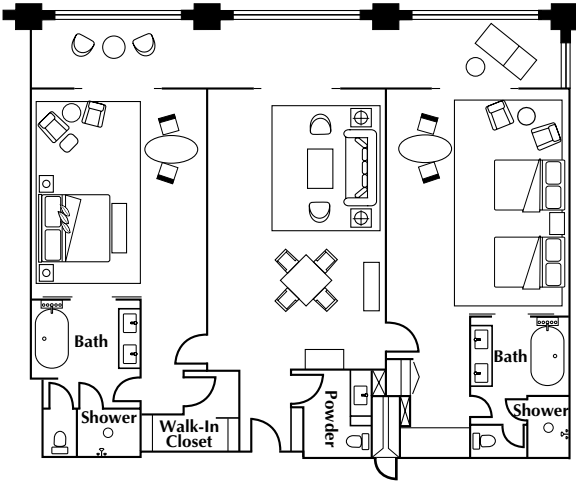
hotel operator
Ritz-Carlton Hotel Company, L.L.C.

main contractor
Shanghai Jinmao Construction Co

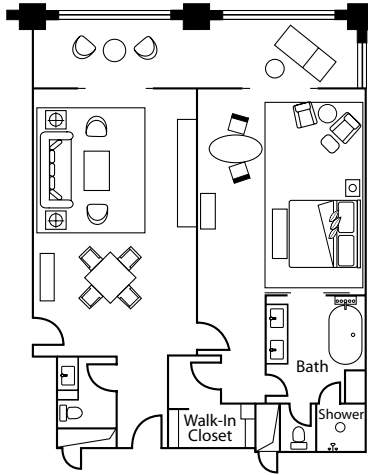
interior contractor
Shanghai Jinmao Construction Co

major supplier
Shanghai Jinmao Construction Co

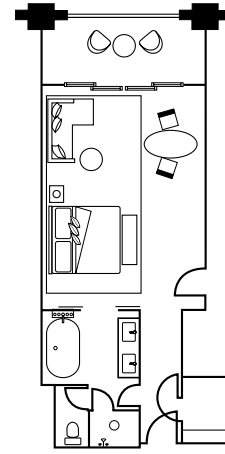




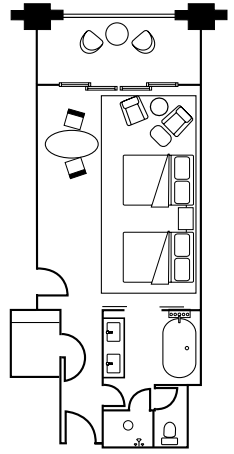
2 Bedroom Deluxe Suite



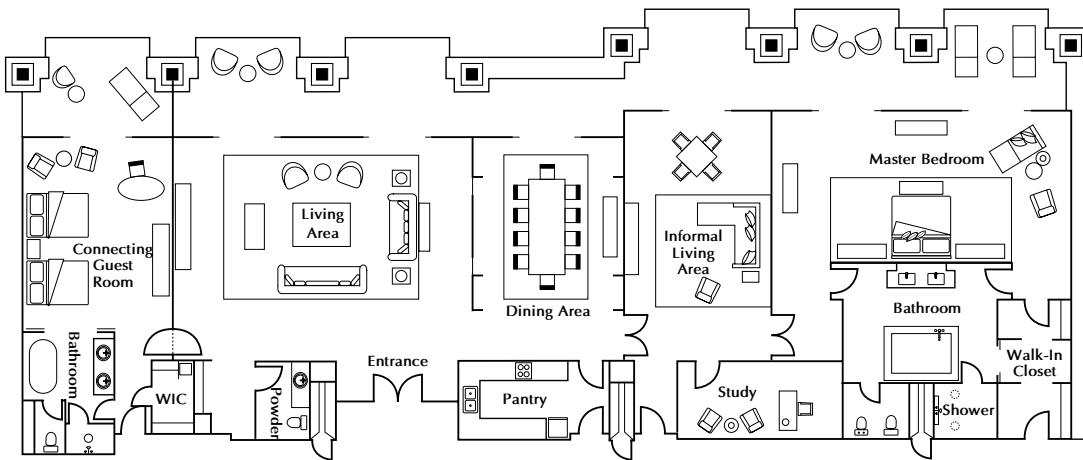
1 Bedroom Suite



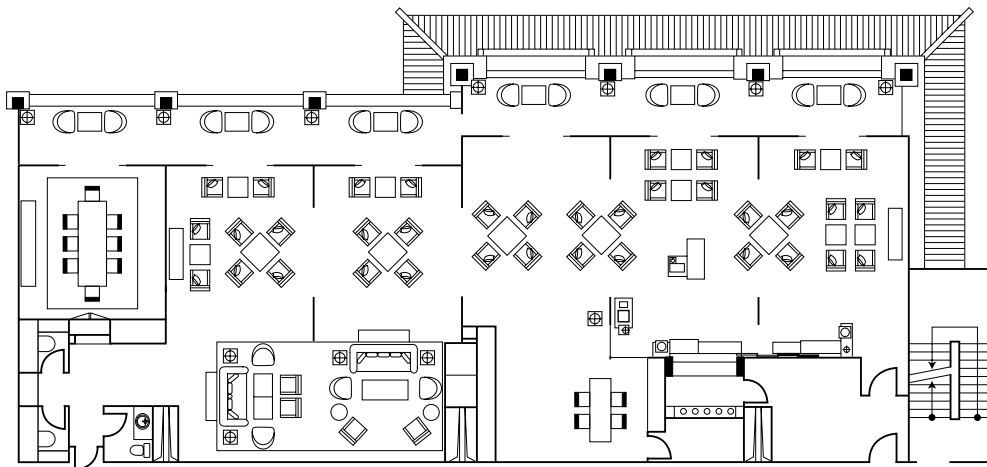
Guest Room - King Bed



Guest Room - Twin Bed



3 Bedroom Suite



Club Lounge