



MGM GRAND Macau

澳門美高梅金殿







Located on a prime waterfront site in Macau's central burgeoning Nam Van gaming district, MGM GRAND Macau is the brand new world-class luxury hotel resort, set to become a stylish new icon in the Macau skyline.

MGM GRAND Macau boasts 600 luxurious guest rooms, of which 24 of them are Villas and 99 are Suites to suit the discerning tastes of its guests. Upper two floors house two Duplex Villas of 440 sq m and 540 sq m. Located in the uppermost segment of the hotel, 24 Villas are the epitome of ultimate luxury. The 99 Suites with area of 138 to 220 sq m are varied in layout and designed in contemporary style with high quality furnishings to satisfy the taste of discerning visitors. Within the 468 guestrooms, the rolling camber of the wave changes the size and shape of each room, creating a varied space in each.

The 35-storey hotel tower soars 154 metres into the sky, and as the shimmering glass of the building reflects the hues of the South China Sea, the shape of the hotel itself mirrors the rolling swell of the ocean surf. Separated into three distinct segments as the building rises skywards, it projects three brilliant shades of gold.

Hotel main lobby



Grande Praca



MGM grand opening ceremony







Upon entering the lobby, guests are impressed by the large ceiling glass sculpture created exclusively for MGM GRAND Macau by the world renowned artist, Dale Chihuly. The delicate hand-blown glass flower named “Fiori di Paradiso Ceiling” echoes with another large wall painting composed of 52 glasses of vibrant hues behind the reception desk also by Chihuly called “Fiori di Paradiso Drawing Wall”. Apart from the large artworks, Chihuly’s works are also showcased on the sides of the corridor outside the world’s second Chihuly concept store after Bellagio’s. The retail gallery features Chihuly’s limited edition fine art prints, books, drawings, architectural installations, etc.

Among MGM GRAND Macau’s major attractions is the Grande Praca. This dynamic space soars 25 metres above ground to a spectacular glass ceiling and overflowing with European-inspired architecture. In particular, the design of the facade in the

middle was inspired by the Central train station in Lisbon. The 1,088 sq m venue makes it an ideal location for fashion shows, exhibitions and all kinds of special events.

Continuing the tradition of MGM MIRAGE in featuring top-class culinary talents, guests at MGM GRAND Macau can enjoy a variety of cutting-edge cuisine at a distinctive ambience. A few of the signature restaurants are nestled in the “French integrated area” of the hotel. Starting with Aux Beaux Arts, meaning “The Beautiful Arts” in Parisian, is a contemporary yet authentic French brasserie. Another two restaurants in the area are The Champagne Bar and The Russian Room. The Champagne Bar has a lit-up inspired ice bar, a monumental black crystal chandelier, the finest multi-colored Saint Louis crystal flutes and most of all, an impressive 2-storey wine cellar which is rarely found.



Aux Beaux Arts

Rossio

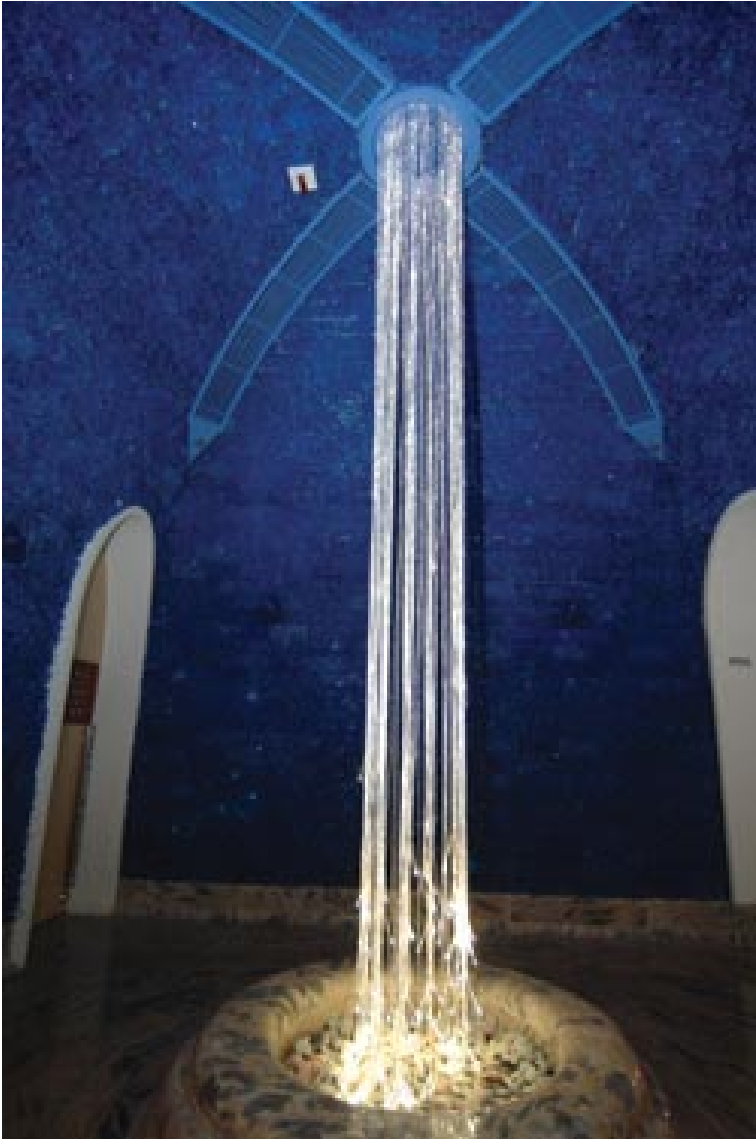




Imperial Court

MGM Patisserie





To add to the distinctive touch of the “French integrated area”, there is an open courtyard with a magnificent crystal chandelier uniquely designed by Saint Louis for MGM GRAND Macau. The chandelier is composed of 70 clear and 70 amber crystal hurricanes, 36 arms and 1,750 pendants on 8 levels and weights over 1.5 tons. One could also find another signature store in this area — the world’s third 3-brands-in-1 “Hermes • Saint Louis • Puiforcat” store. It has brought together the premium Hermes’ porcelain, Puiforcat’s silverware and Saint Louis’ crystal for the esteemed guests at MGM GRAND Macau.

Other restaurants include Rossio, an “open kitchen” style restaurant similar to Bellagio’s signature restaurant designed by the famous Japanese interior design firm, Super Potato Group; Imperial Court, a Chinese restaurant that serves the finest Cantonese cuisine. Another branded F&B outlet is the Veuve Clicquot Lounge, which is the first in Macau, featuring 3 out of 60 the world’s limited signature “love seats”.

MGM GRAND Macau is filled with artistic inspirations. Besides the presence of Dale Chihuly, one could also find the works of the master in surreal art, Salvador Dali, in many parts of the hotel. His masterpieces in MGM GRAND Macau include, “Piano Surrealist”, “Dalinian Dancer”, “Woman of Time”, etc.

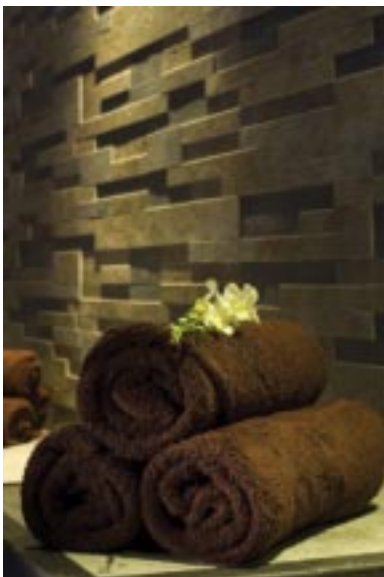
The Six Senses Spa occupies 2,720 sq m that includes twelve treatment areas with state-of-the-art facilities such as the floatation pool, vitality pool with air loungers, herbal steam room, snow room, hamam and sauna, etc. The sanctuary is designed according to the Five Elements of the Universe — Metal, Wood, Water, Fire and Earth.



Love seats



Six Senses Spa





VIP hotel lobby



Adding to the luxurious ambience of the VIP hotel lobby of MGM GRAND Macau, the ceiling is decorated by hand with gold foil; leading out to the VIP lounge in the lobby named Great Room, where VIPs could chill and enjoy the hotel's exclusive check-in service.

A convertible convention space of 1,452 sq m including The Grand Ballroom of 807 sq m, is the ideal venue for business meetings, social events and weddings.

Fashioning a contemporary ambience that incorporates the best influences of both the East and the West and the expansive experience of the partners, the casino gaming floor generates an energy and excitement that are simultaneously intense and uncomplicated. Phase one accounts for 20,620 sq m in area, spreading over two levels and wrapping around the Grande Praca. Casino area includes 385 table games, 888 slots machines and 16 private gaming





Fast Facts

location	Nam Van, Macau
site area	22,000 sq m
GFA	Hotel - 145,742 sq m Casino - 28,390 sq m
number of hotel rooms	Approx 600 (Duplex Villas – 2; Villas – 24; Suites – 99; Guestrooms - 468)
number of hotel tower's storeys	35
area of hotel rooms	Duplex Villas – 440 and 540 sq m Villas – 220 to 380 sq m Suites – 138 to 220 sq m Guestrooms- 48 to 66 sq m
area of Grande Praca	1,088 sq m
area of Six Senses Spa	2,720 sq m
areas of convention space	1,452 sq m
commencement date	June 2005
completion date of Phase One	December 2007
total project cost	US\$1.25 billion, including land and license rights, pre-opening and capitalized interest







Vista





Grand ballroom

salons for preferred customers. Salons can range in size from a single table room to salons that accommodate up to 20 tables. Expansion plan accounts for an additional 4,400 sq m in area.

MGM GRAND Macau is a development born of the partnership of two prominent industry leaders and innovators, Pansy Ho and MGM MIRAGE. Phase one development was completed in December 2007.

developers
Ms Pansy Ho and MGM MIRAGE

architect and lead consultant
Wong & Tung International Ltd

Macau registered architect
Eddie Wong & Associates Ltd

management contractor
Hip Hing Engineering (Macau) Ltd

concept design architect
YWS Architects

hotel interior design consultant
Wilson & Associates, INC

casino concept interior design consultant
Dougall Design Associates Incorporated

casino interior designer
LRF Designers Ltd

landscape architect
Belt Collins International

quantity surveyor
Davis Langdon & Seah Hong Kong Ltd

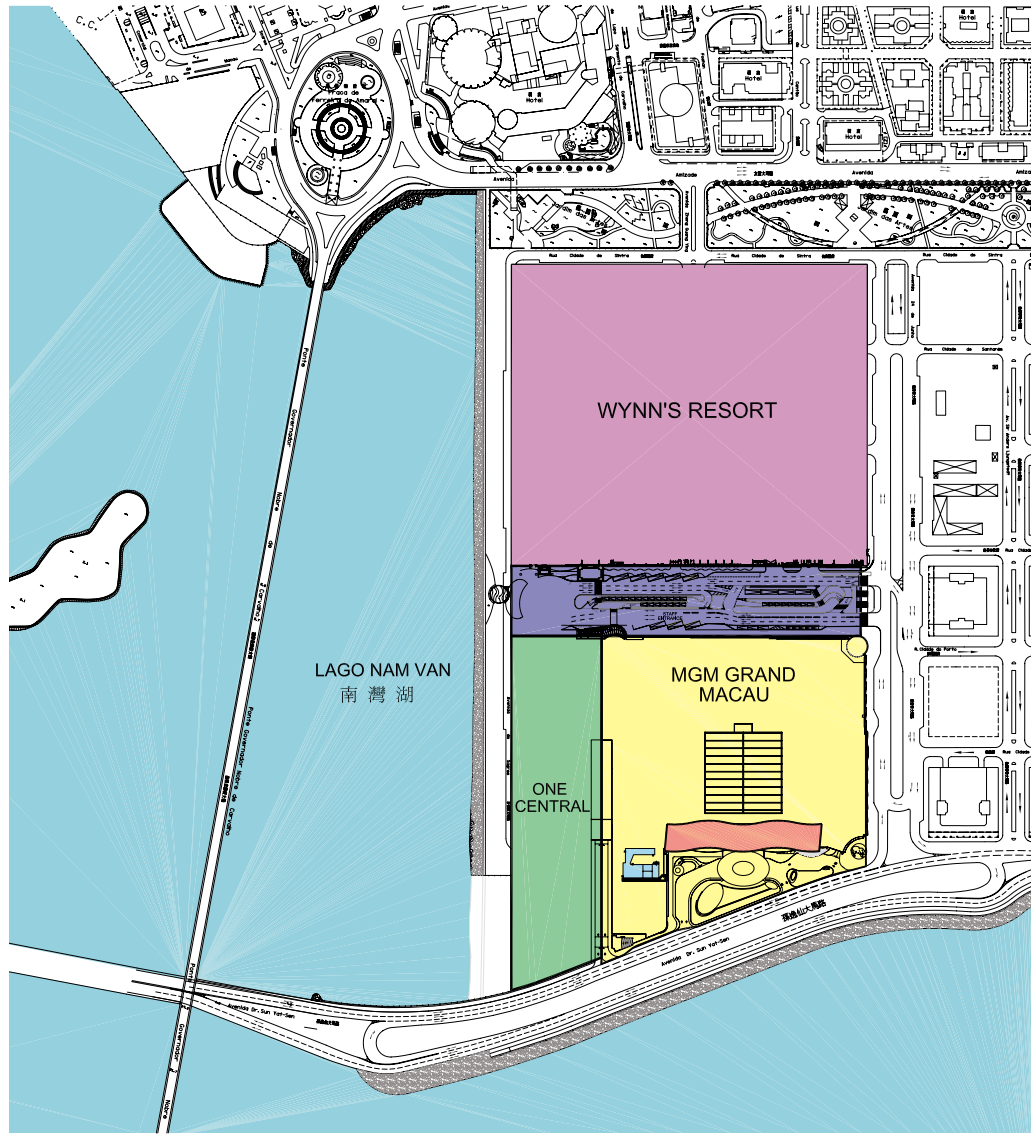
registered civil engineer
Siu Yin Wai & Associates (INT'L) Ltd

fire engineering consultant
Arup Fire

facade consultant
Hyder Consulting Ltd

LEGEND 圖例:

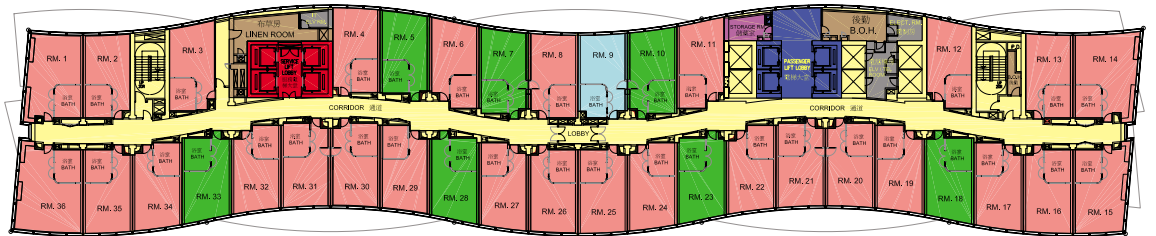
- MGM GRAND MACAU
- ONE CENTRAL
- WYNN'S RESORT
- TRAFFIC ZONE
- MGM GRAND MACAU - HOTEL TOWER
- HEATED SWIMMING POOL



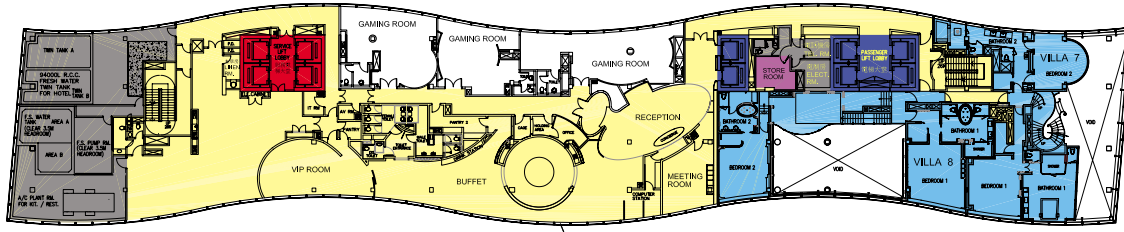
Master layout plan

LEGEND 圖例:

- HOTEL:
- HOTEL COMMON AREA
 - SERVICE LIFTS
 - GUEST LIFTS / LOBBY
 - HOTEL STORAGE
 - B.O.H.
 - PLANT ROOM AREA
 - HANDICAPPED GUEST ROOM
 - DOUBLE ROOM
 - KING ROOM



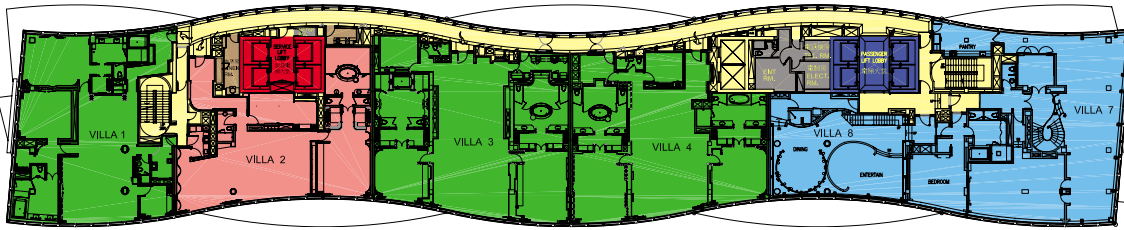
Level 5 to 17, typical guestroom



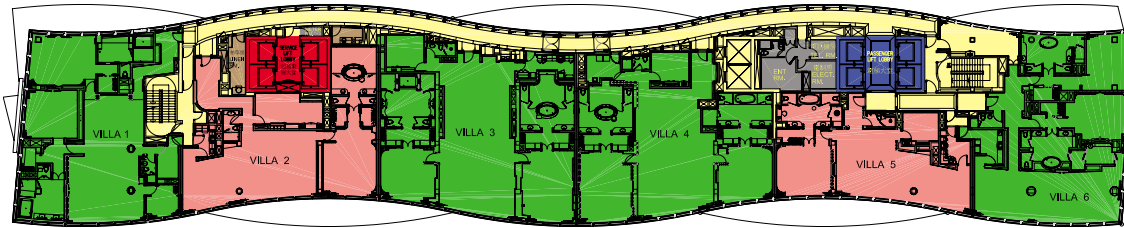
Level 35, penthouse

LEGEND 圖例:

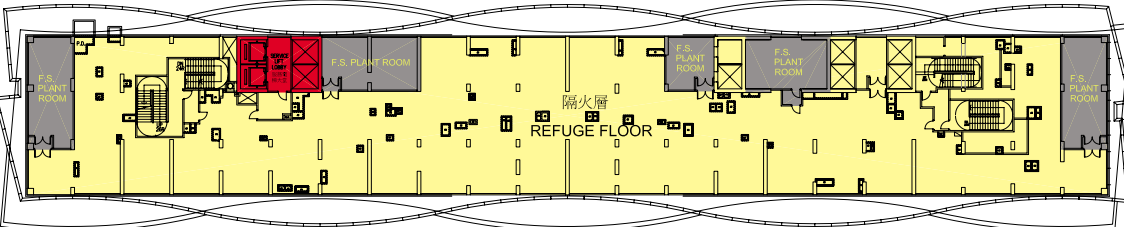
- CASINO:
 - CASINO
- HOTEL:
 - HOTEL, ASSOCIATED FACILITIES AND HOTEL BOH
 - SERVICE LIFTS
 - GUEST LIFTS
 - HOTEL STORAGE
 - B.O.H.
 - PLANT ROOM AREA
 - 1 BEDROOM VILLA
 - 2 BEDROOM VILLA
 - PENTHOUSE VILLA



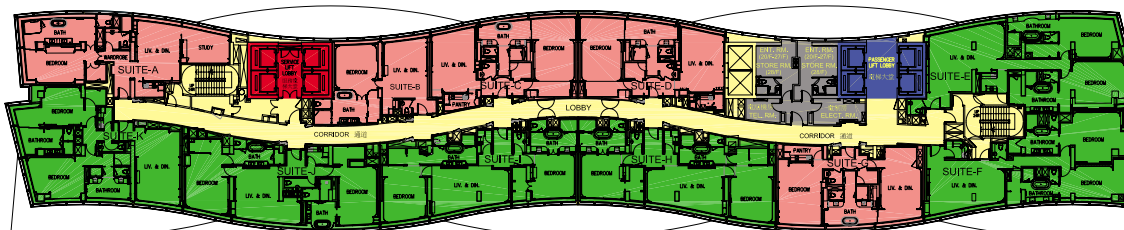
Level 34



Level 30 to 33, villa



Level 29, refuge floor



Level 20 to 28, suite

