



Siu Sai Wan Complex

15 Siu Sai Wan Road, Chai Wan

Siu Sai Wan Complex is a municipal services building offering recreational and leisure facilities to the community. It consists of a 1000-seat multi-purpose arena, two indoor swimming pools, a small library, a community hall and other facilities.

Vertical sun-shading screens in timber outlook marching from the exterior into the interior invite people to explore the richness of the building contents. This volumetric expression is juxtaposed by linear features in the form of horizontal slats for sun-shading and rain-screening, entrance canopy and roof skylight to

form a clean, rhythmic yet striking composition. The complex stands out as an elegant iconic clubhouse for the community.

Streetscape exemplifies vividly the energy and charisma of the community where people interact with the spontaneous daily events. It forms part of the collective memories of the people. The design is to capture these precious moments through the creation of a “Vertical Street” at its interior.

Events and activities will be generated when movement of public flows into the complex. An aluminium-clad curvilinear



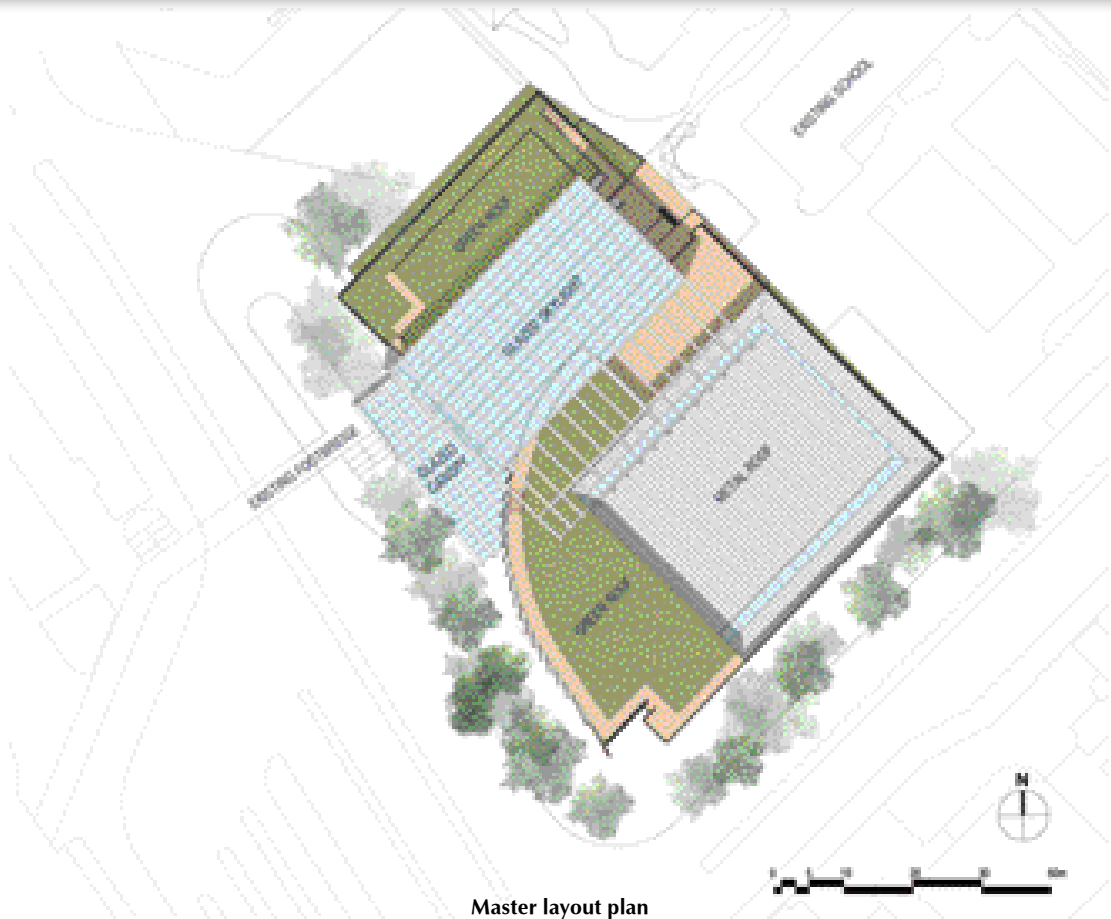


facade feature in timber outlook is designed as an iconic welcoming feature to invite people into the building. The entrance is clearly marked by a double-storey glass canopy. Activities in the central atrium are connected with the existing community network through the extension of the existing footbridge over Siu Sai Wan Road and linked to the shopping mall on the other side.

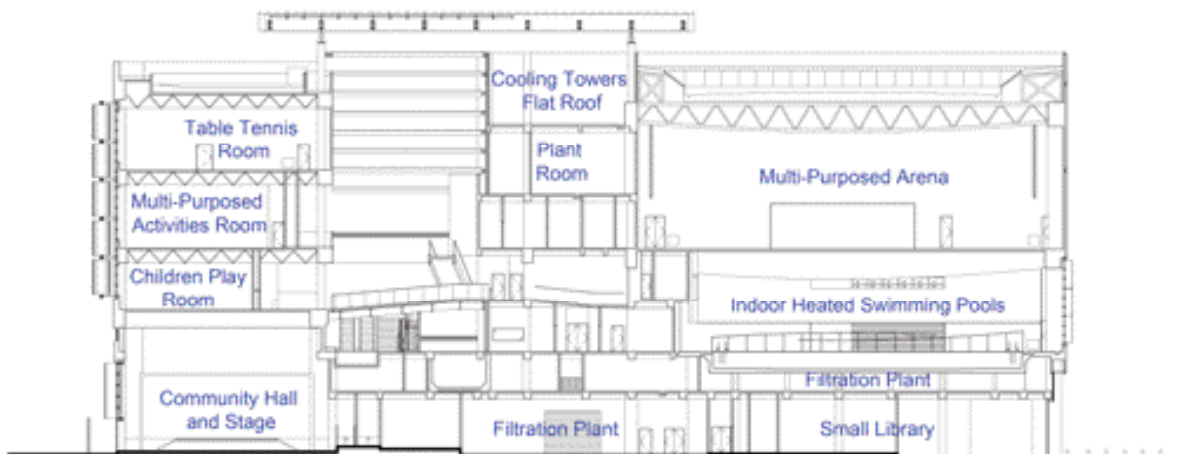
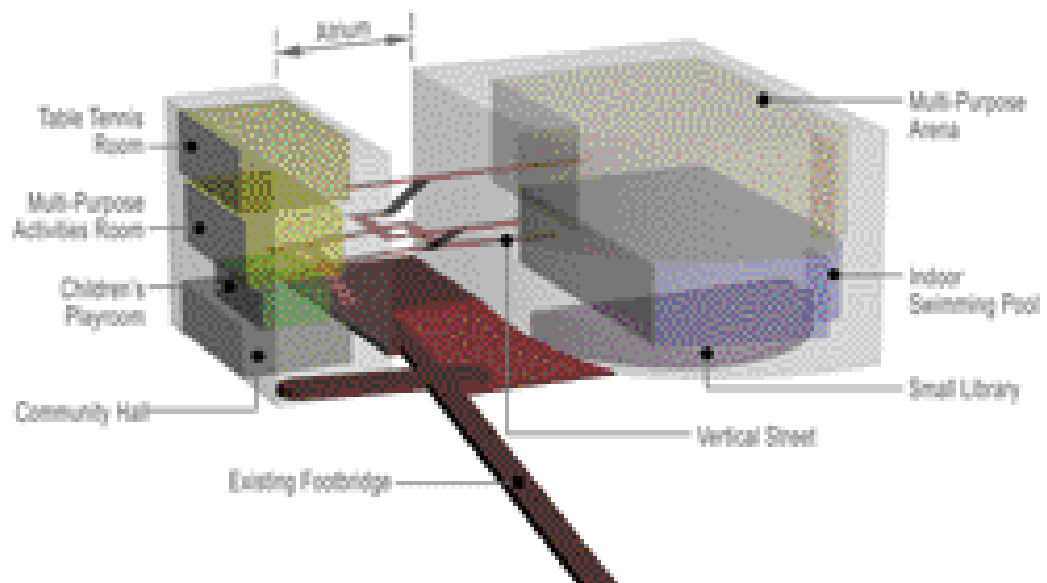
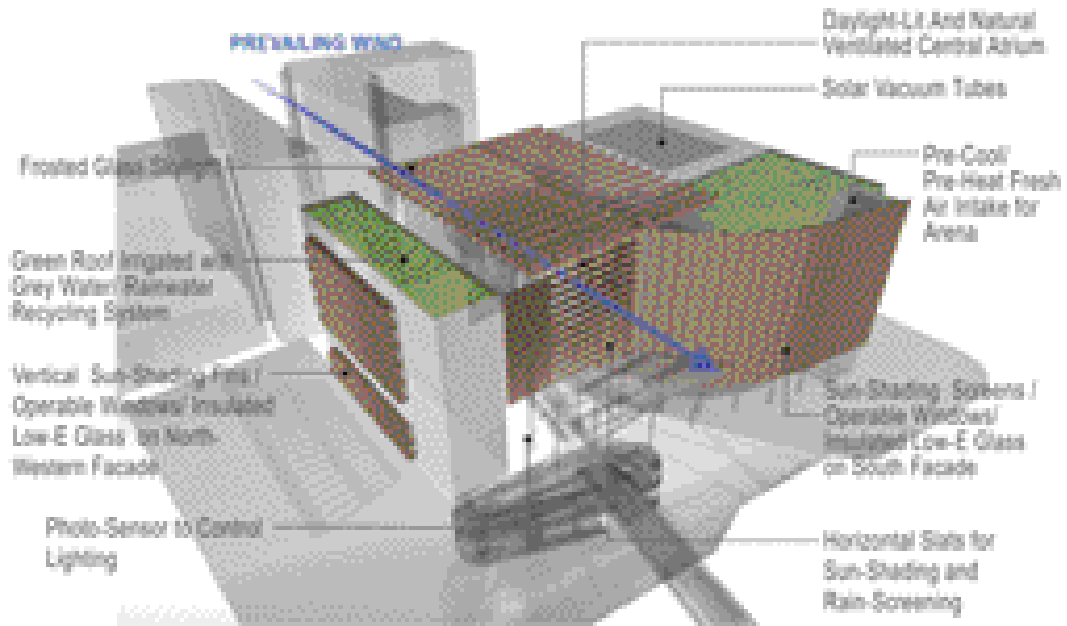
Circulation spaces in the form of balconies, platforms, bridges, stairs and escalators are strategically linked up to form the "Vertical Street" that connects the various levels. It allows people to identify the various functions in the building along its route. The two sides of the atrium incorporate the functional programmes which can all be directly accessed from the "Vertical Street". Different nodes in the form of pocket spaces of varying spatial qualities are incorporated in the "Vertical Street". They are flexible in usage to accommodate different possibilities to encourage spontaneous events to take place and enrich the liveliness of the streetscape. The project was completed in 2011.



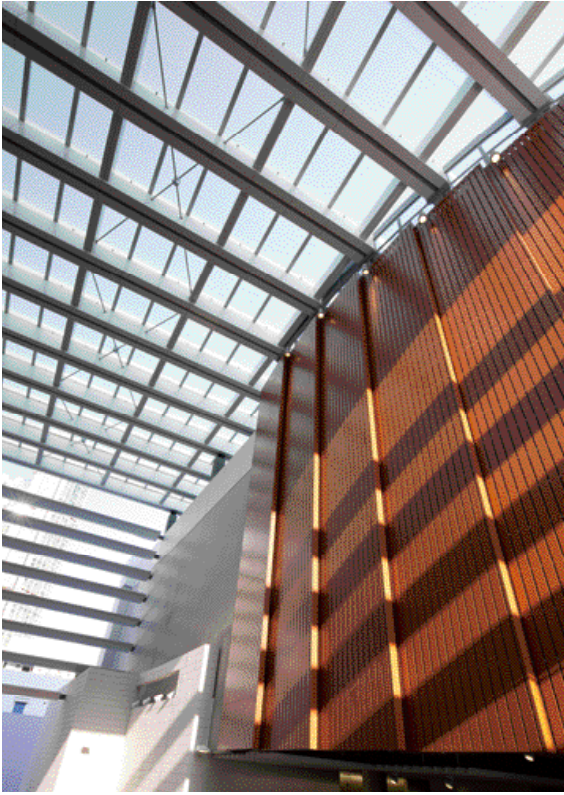




Master layout plan



Section



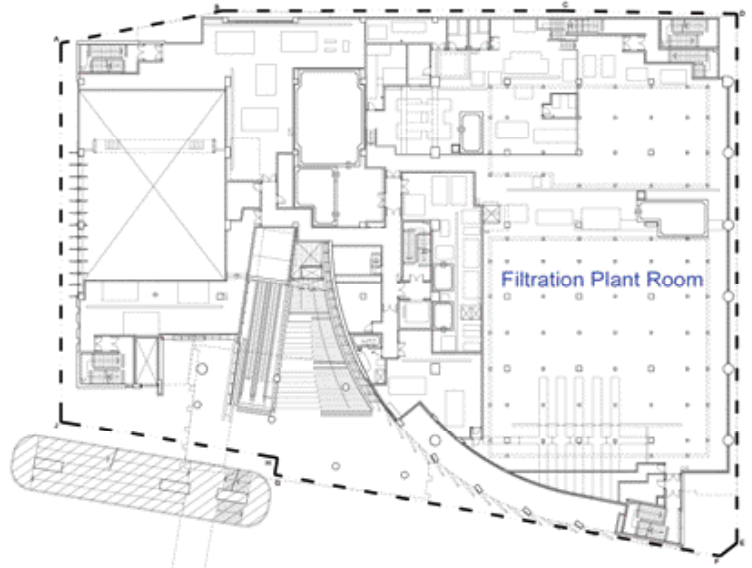
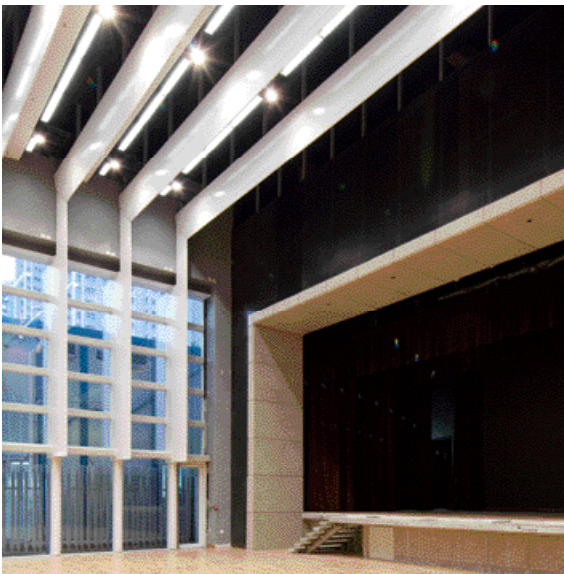
client department
**Leisure and Cultural Services Department, HKSAR Government
Home Affairs Department, HKSAR Government**

architects
**Architectural Services Department, HKSAR Government
Ronald Lu & Partners**

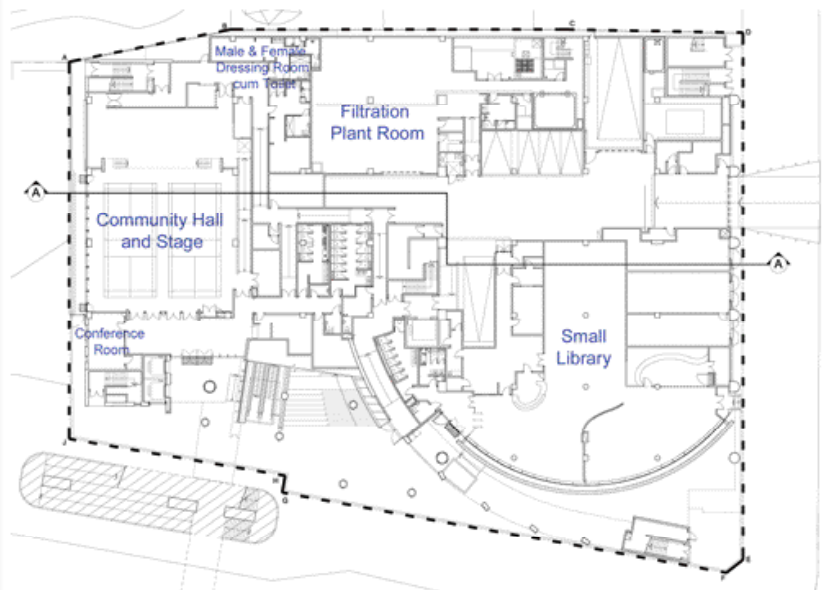
structural design consultants
Mott MacDonald Hong Kong

building services consultants
Aecom Asia

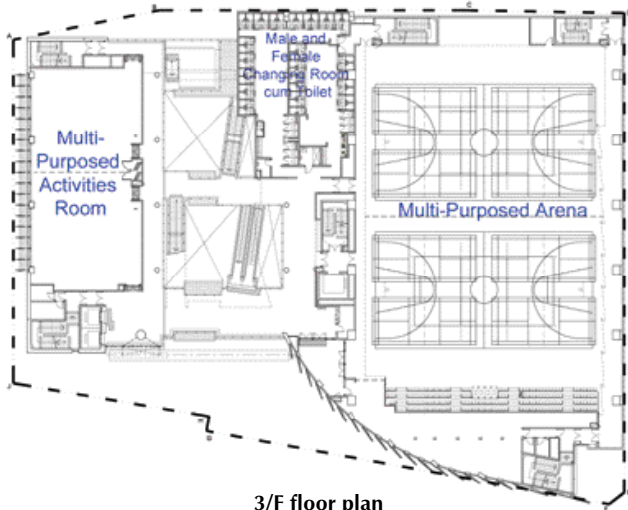
main contractor
China State Construction Engineering (HK) Ltd



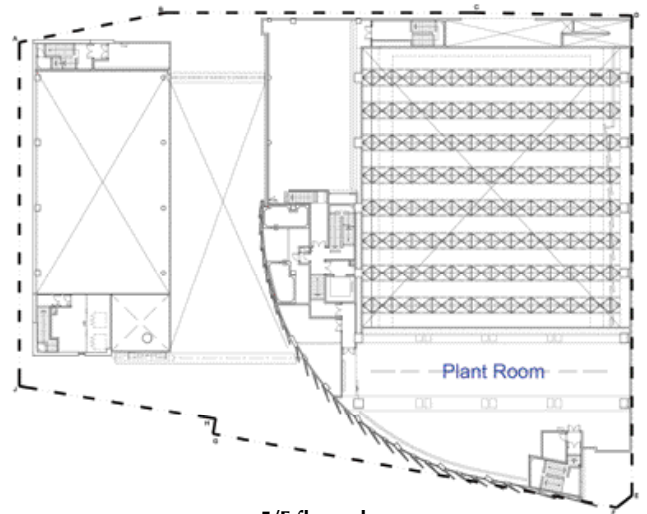
M/F floor plan



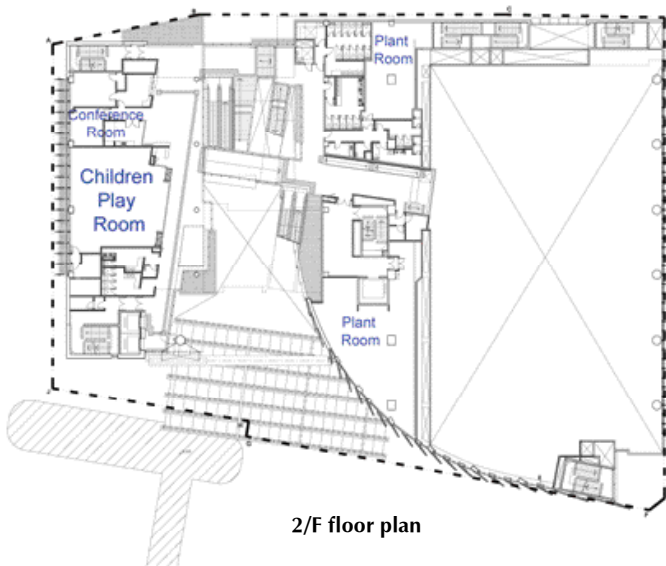
G/F floor plan



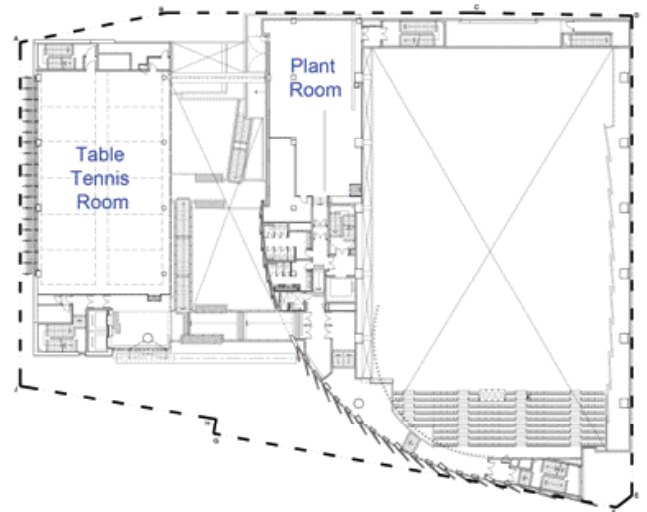
3/F floor plan



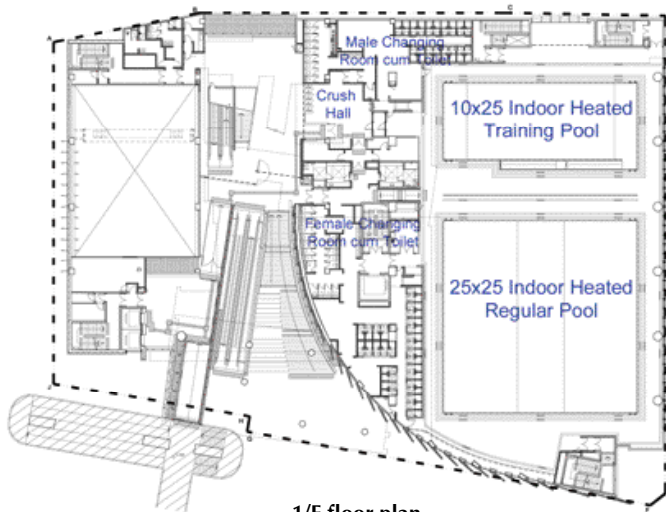
5/F floor plan



2/F floor plan



4/F floor plan



1/F floor plan



Tamar Development



New Civil Aviation Development



Air-cooled Screw Chiller
& Heat Recovery Chiller



Expansion of Tseung Kwan O Hospital



Siu Sai Wan Complex



Single Screw
Water Cooled Chillers



Tin Shui Wai Public Library cum
Indoor Recreational Centre



EN Certified
Air Handling Unit



HEXAGON
Inverter Chiller



Oil Free
Water-cooled Chiller



Dual Compressor
Centrifugal Chiller



Water Cooled
Centrifugal Chiller



Air Handling Unit



We are proud to supply AHUs in HKSAR Projects



HKSAR Government Headquarters at Tamar Development



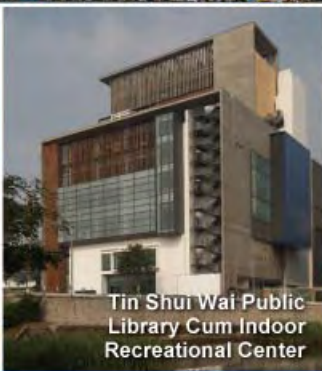
Town Park, Indoor Velodrome-cum-Sports Centre



Siu Sai Wan Complex



City Hall Annex



Tin Shui Wai Public Library Cum Indoor Recreational Center



New Civil Aviation Department Headquarters



偉基空調有限公司 WELCOME AIR-TECH LTD.

Unit B300, 3/FI., Block B, Sea View Estate,
No. 2-8 Watson Road, North Point, Hong Kong.
Tel: (852) 2806 8316 Fax: (852) 2806 2426
E-mail: sales@saiver-welaire.com.hk
Website: www.saiver-welaire.com.hk



Integrated AHU
FCU, CRAC & Chiller



Oil Free Chiller

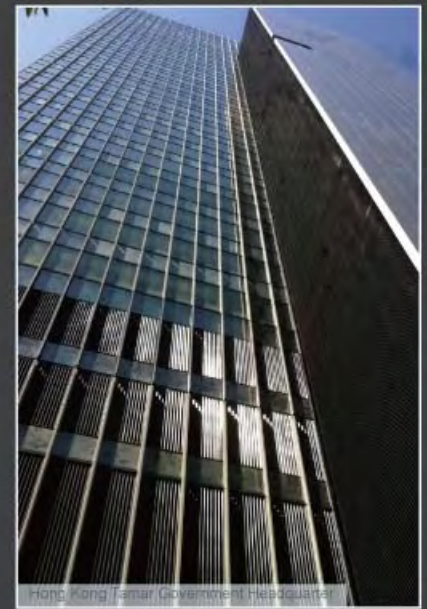


Ventilating Fan & Filter



FSV / FS MULTI

Specialist in Smoke / Natural Ventilation / Solar Control / Weatherproof Louvres



FAS Engineering Limited (FAS) is a Hong Kong based company specialized in supply, design and application engineering works which offers ventilation, smoke control and solar control solutions to clients in the building and construction aspects. We are the sole distributor of "Colt International" which has over 75 years experiences in research, design & manufacture of smoke ventilation and associated equipments.

Colt Group is an ISO9001 standard registered firm with worldwide experience and substantial track records in Hong Kong, China & Asia, for smoke ventilation design and manufacture of associated equipments. With 20 years local experience in the field of smoke ventilation, FAS is capable of providing application engineering with technical support by Colt to satisfy the customers' needs and requirements of authority.



FAS Engineering Limited
Unit 607-8, 6/F, Block B, Hoi Luen Industrial Centre,
55 Hoi Yuen Road, Kwun Tong, Kowloon.
Tel : 2107 4888 Fax : 2107 4555
Email : marketing@fas-hk.com Website : www.fas-hk.com

COLT
Approved Sole Representative



VALBRUNA ITALY

STAINLESS STEEL



REVAL® 不銹鋼螺紋鋼



角鋼



六角鋼



方鋼



圓鋼



扁鋼

華寶不銹鋼亞洲有限公司

(意大利華寶鋼廠附屬公司)

香港中環皇后大道中74號皇后中心15樓1501室

電話: +852 2854 1199

深圳辦: +86 755-8222 6465

傳真: +852 2854 1177

www.valbruna.org

電郵: sales@valbruna.org

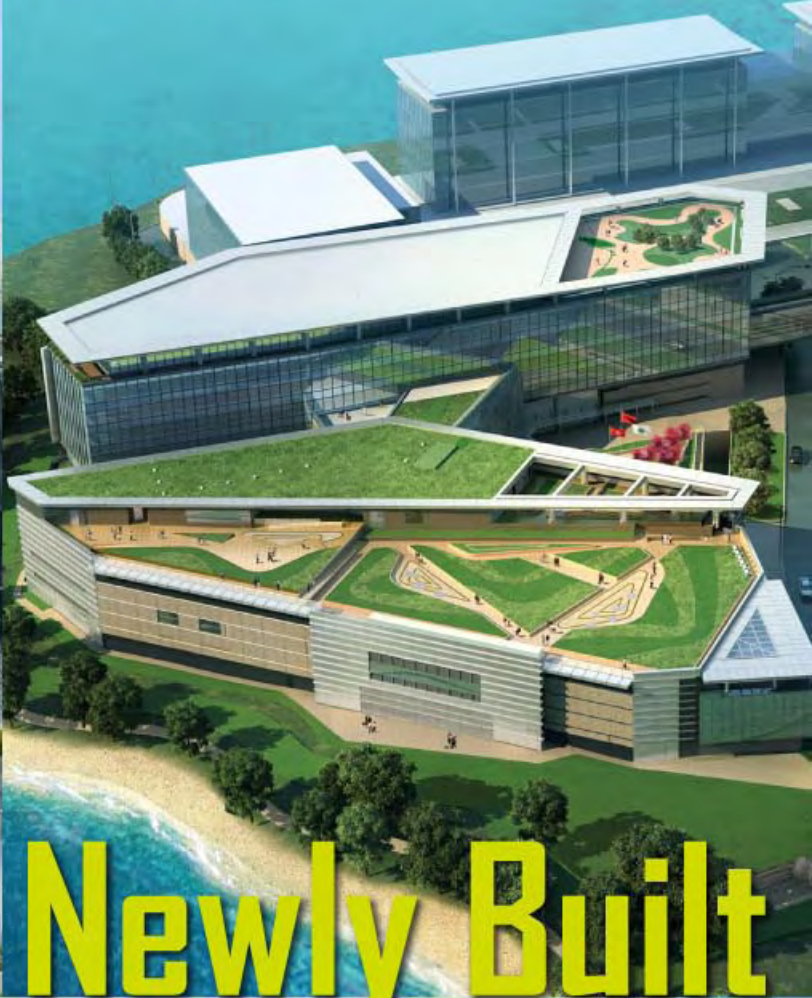
www.valbruna-stainless-steel.com



HKSAR Government Headquarters at Tamar
**Coating System for Exterior Wall :
Ceraskaken**



New Civil Aviation Department Headquarters
**Coating System for Carpark Floor :
Arkifloor ENG**



Newly Built

SKK in Japan, Hong Kong, Shanghai & Singapore
have been awarded

ISO 9001 : 2008
ISO 14001 : 2004



Government Projects

10/F, Dah Sing Financial Centre, 108 Gloucester Road, Wanchai, HK.
T : 2529 3968 F : 2527 0299 W : www.skkhk.com.hk E : enquiries@skkhk.com.hk



Rasonic 樂信牌

噴射式乾手機



RBD-JJ70A

智能噴射式兩面出風，乾手速度特快

全新樂信牌乾手機，風力強勁，特有噴射式兩面出風，乾手速度更快。配備微電腦智能控制及紅外線感應開關，使用時不需接觸任何按鈕，潔淨衛生。



手伸入乾手槽，液晶顯示屏點亮



屏幕顯示噴射式出風

18

預設18秒乾手時間，節省能源

30%* off your building's energy bill is just the beginning

Imagine what we could do for the rest of your enterprise

Managing complex building environments while meeting your energy efficiency targets is no small task. Our EcoStruxure™ energy management architecture achieves this elegantly through intelligent integration of building systems on a single IP platform.

The savings go far beyond buildings

Today, only EcoStruxure energy management architecture by Schneider Electric™ delivers up to 30% energy savings, uniting energy-intensive systems like HVAC, access control, video security management, and lighting control across your entire enterprise. Saving up to 30% of a building's energy is a great beginning, and thanks to EcoStruxure energy management architecture, the savings don't have to end there.



Learn about saving energy from the experts!

Download this white paper, a HKD 1500 value for FREE!

Visit www.SEreply.com Key Code 48247f

Customer Care Centre 2579 9699

EcoStruxure™

Active Energy Management
Architecture from Power Plant to Plug™



Data centres

From the rack to the row to the room to the building, energy use and availability of these interconnected environments are closely monitored and adjusted in real time.



Buildings

Intelligent integration of security, power, lighting, electrical distribution, fire safety, HVAC, IT, and telecommunications across the enterprise allows for reduced training, operating, maintenance, and energy costs.



Industrial plant

Open standard protocols allow for system-wide management of automated processes with minimized downtime, increased throughput, and maximized energy efficiency.

30%

Schneider
Electric™

施耐德電氣



New Civil Aviation Department Headquarters



Leading Paint Manufacturer in Asia

A team of service professionals dedicated to customer satisfaction. We specialize in:

- Architectural Coatings
- Decorative Coatings
- Industrial Coatings
- Floor Coatings
- Colour Matching & Design
- Industrial Coatings
- Metal Protective Coatings
- Renovation Projects



NIPPON PAINT (H.K.) CO., LTD.

Unit 509-515, 5/F, Trade Square, 681 Cheung Sha Wan Road, H.K.

Tel: (852) 2699 9333 Fax: (852) 2602 8844

Email: np@nipponpaint.com.hk Website: www.nipponpaint.com.hk

A MEMBER OF THE NIPSEA GROUP



The honor of Green Awards



Congratulations to ArchSD 25th Anniversary



Cross District Community Culture Centre in Lower Ngau Tau Kok Estate

ICAC Headquarters Building

Hong Ning Road Government Quarters

Kai Tak Cruise Terminal



HK SZ Western Corridor Co-location of Boundary-Crossing Facilities



28A Sports Centre, Fanling, Sheung Shui



Tin Shui Wai Area 101 Sports Center



The Tamar Project



Cheung Sha Wan Government Office



Hong Kong Science Museum



Joint User Complex and Wholesales Fish Market at Tuen Mun



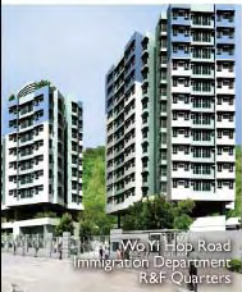
J. ROGER PRESTON LIMITED
 澧信工程顧問有限公司
 MECHANICAL AND ELECTRICAL CONSULTING ENGINEERS

Growing with Hong Kong

JRP will be celebrating
50th Anniversary
 in 2012

JRP, a leading M&E Consultancy group in the Asia Pacific region. With over 49 years of practicing experience, we take pride in the diverse portfolio of prestigious projects we have completed.

JRP is committed to contributing our expertise and experience for improving the built environment. We aggressively take part in sustainable engineering design, responding to the increasing demand of Green buildings within the region.



Wo Yi Hop Road Immigration Department R&F Quarters



North Point Government Offices

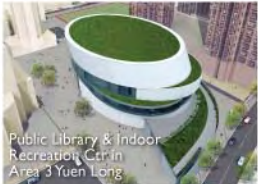


Tsing Yi Complex

The Hong Kong Cultural Centre



Area 18, Tung Chung Open Space



Public Library & Indoor Recreation Ctr in Area 3 Yuen Long



Pak Kau College



SKH St. Andrews Primary School



North Lantau Hospital, Phase I



Lai King Government Quarters



Caritas Lok Kan School



SKH St. Mary Church College



T (852) 2590 9333 F (852) 2590 9897

E Info@jrp-group.com W www.jrp-group.com

Level 11, Tower 1 Millennium City 1, 388 Kwun Tong Road, Kowloon, Hong Kong



IVE Engineering

Your Partner in Professional Development

Professional Development Courses on Building Development and Design

Buildings Ordinance and its Administration Procedures	15 hrs
Building Planning Regulations and Development Control	15 hrs
Application of Sustainable Building Design (SBD) Guidelines	12 hrs
Fire Safety for Building Planning	12 hrs
Fire Service Regulations and Requirements	7 hrs
Introduction to Fire Safety Engineering	7 hrs
Site Design, Building Design, Construction Details and Documentation	18 hrs
Barrier Free Access Design for Buildings	9 hrs
Introductory Workshop on Building Information Modelling (BIM)	6 hrs

Get more information

<https://EDIT.vtc.edu.hk>
EDIT@vtc.edu.hk
2435 9423

Member of  VTC Group

EDIT.vtc.edu.hk



金門·協興 添馬艦新政府總部
Central Government Complex, Tamar



太古地產 北京三里屯工程
Sanlitun Village, Beijing

Recent Completed Recycle Plastic-wood Projects 近期完成之著名環保木工程



新昌 彩雲道工程
Choi Wan Road

hingswood[®]
recycle ecology wood

Living a sustainable life



瑞安 東離五期工程
Eastern Harbour Crossing Site Phase 5



瑞安 葵聯路工程
Kwai Luen Road

more than 300 local & China job references
in the past 5 years
(過往5年, 中港實質工程已超過300個)



Recycle Plastic-wood Specialist

興業塑膠五金製品廠
HINGS PLASTIC & METAL PRODUCTS MFY.

2/F., Hings Building, 594 Reclamation Street, Mongkok, Kowloon, Hong Kong
Tel: (852) 2669 1939 Fax: (852) 2669 1792 Web Site: www.hings.hk E-mail: hingsmp@hings.hk
Member of The Hings Group of companies
Hings Outlets : Wanchai • Mongkok • Macau • Guangzhou • Shunde • Singapore



GOVERNMENT OFFICE & COMMERCIAL



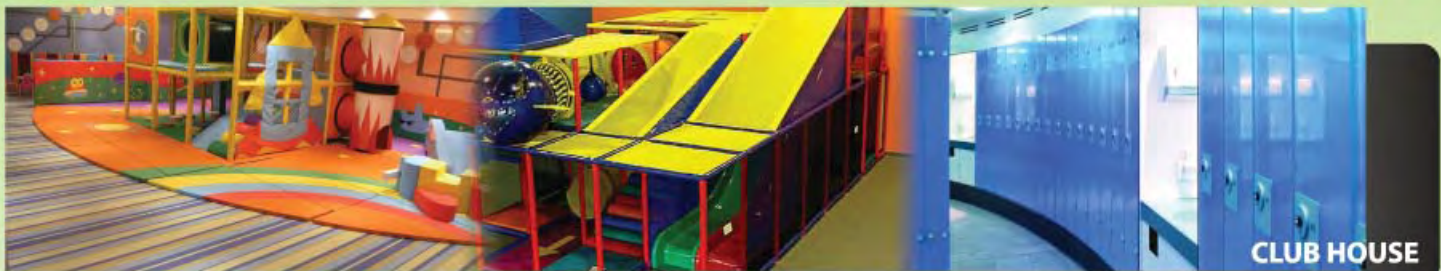
SPORTS CENTRE & SWIMMING POOL



HOSPITAL & CLINICS



PUBLIC FACILITIES



CLUB HOUSE



SPORTS & RECREATION

GENESIS

T (852) 2503 1868

F (852) 2503 1768

E info@genesisdev.com.hk

Unit B, 2/F., Mackenny Centre, 660 Castle Peak Road,
Lai Chi Kok, Kowloon, Hong Kong.



Performance Drywall & Ceiling Systems



Recent projects reference:

- New Civil Aviation Department Headquarters
- City of Dreams, Macau
- North Mall, Ph 1, Podium, Venetian Macau
- Wynn Casino & Resort Ph 1, Macau
- One Island East, Quarry Bay
- Prince of Wales Hospital Extension Block, Shatin
- Science Park Ph 3, Shatin
- Mandarin Oriental Hotel, Landmark
- Disneyland, Hong Kong
- AIG Tower, Central
- Pacific Place Ph 3, Queensway
- West Rail Siu Hong & Tuen Mun Station



Rm. 702-5, Yen Sheng Centre, 64 Hoi Yuen Road,
Kwun Tong, Kowloon, Hong Kong.

Tel: (852) 2811 5253

Email: cemachk@cemachk.com

Fax: (852) 2516 5115

<http://cemas.com.cn>



Italian Made FLAVIKER Tile Producer

PI.SA

Marmi Preziosi Series Made by our leading digital technology – Ink Jet System, it can transform the taste of natural marble onto our normal products and special 3 D surface.



Please download our catalogue at www.flavikerpisa.it



WWW.BUONAIDEA.COM.HK

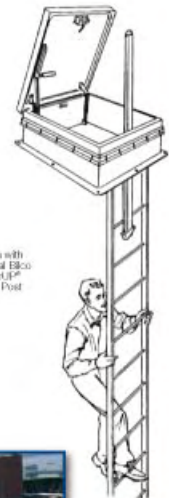
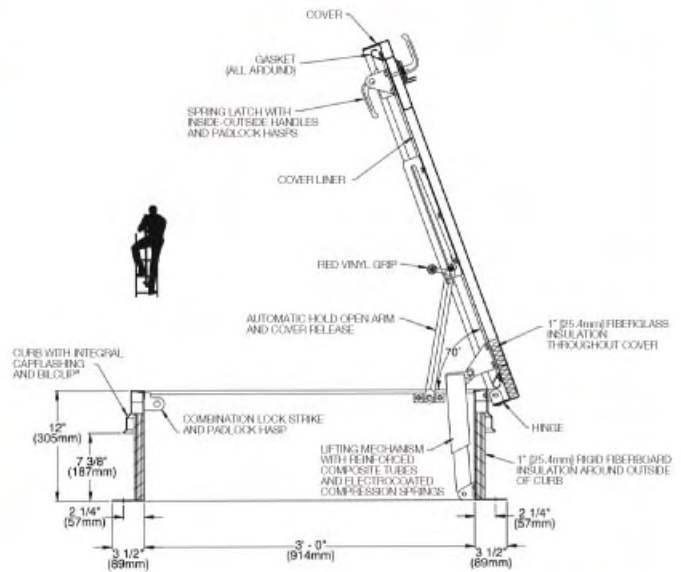
美意建材(國際)有限公司 Buona Idea Building Materials (Int'l) Limited

香港九龍觀塘開源道55號開聯工業大廈B座606室

Room 606, Block B, Hoi Luen Ind. Centre, 55 Hoi Yuen Road, Kwun Tong, Kowloon, Hong Kong SAR

電話 Tel: (852) 2543 4243 傳真 Fax: (852) 2543 0408 電郵 E-mail: buonaid@netvigator.com

Bilco Roof Hatch



Description:

The easy one-hand operation to the fully open or closed position provides the user the security of having one hand firmly on the ladder at all times. Available in galvanized steel, aluminum, or stainless steel construction.

Specifications:

Material

Steel: Cover and frame are 14 gauge (1.9mm) G-90 paint bond galvanized steel

Cover

Breakformed, hollow-metal design with 1" (25.4mm) concealed fiberglass insulation, 3" (76mm) beaded, overlapping flange, fully welded at corners, and internally reinforced for 40 psf (195 kg/m²) live load

Curb

12" (305mm) in height with integral capflashing, 1" (25.4mm) fiberboard insulation, fully welded at corners, and 3-1/2" (89mm) mounting flange with 7/16" holes (11mm) provided for securing frame to the roof deck

Gasket

Extruded EPDM rubber gasket permanently adhered to cover

Hinges

Heavy-duty pintle hinges with 3/8" (9.5mm) Type 316 stainless steel hinge pins

Latch

Slam latch with interior and exterior turn handles and padlock hasps

Lift Assistance

Compression spring operators enclosed in telescopic tubes. Automatic hold-open arm with grip handle release

Finish

Steel: Alkyd base red oxide primer

Hardware

Steel: Engineered composite compression spring tubes. Steel compression springs with electrocoated acrylic finish. All other hardware is zinc plated/chromate sealed



Project: The Hong Kong Polytechnic University 香港理工大學
Model: SS-90 Stainless Steel Roof Hatch

Hong Kong Sales Distributor

Power Creation Engineering Ltd.

展力工程有限公司

9/F, Sui On Industrial Bldg., 134 Wai Yip Street, Kwun Tong, Kln.

T 852-2304-4300 F 852-2304-4700

E alex@powercreation.com.hk

W www.powercreation.com.hk

Macau Sales Distributor

Ho Hing Eng. Co. Ltd.

豪興工程有限公司

Edif. Jardim Hoi Wan, 6 Andar, A06, Rua BAIA No. 55, Taipa, Macau

T 853-2885-7525 F 853-2884-8243

Mobile phone 853-6655-1260 E hohing@macau.ctm.net

"If it can be built, we can build it."

*Charles Chau, Intelligent Building Systems Specialist
Gary Wong, Engineering Equipment Specialist*



Your building just got smarter

The widespread adoption of intelligent technologies for buildings means one thing to us: transformation. From the day we opened our doors 35 years ago, we have been at the forefront of synergising how engineering and technology can transform the way we live. Whether it's residential or industrial, commercial or public, we work hard to deliver smart engineering solutions for truly intelligent buildings.

**ESTABLISHED IN HONG KONG AND
MOVING HONG KONG FOR
OVER 30 YEARS**

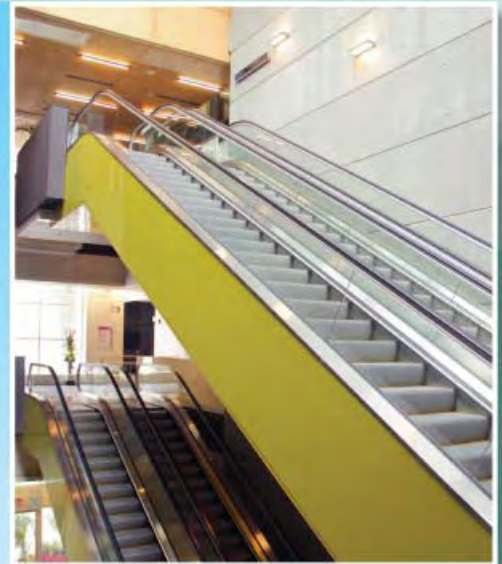
ANLEV

ANLEV ELEX ELEVATOR LTD
安力電梯有限公司

A member of the Analogue Group of Companies

We supplied Sai Kung Tseung Kwan O Government Complex with:

- 3 units of machine-room-less passenger elevator at 1000kg
- 3 units of passenger elevator from 1000kg to 2500kg
- 4 units of escalator from 5M to 6.5M rise



ANLEV, a member of the Analogue Group of Companies, specialises in the manufacture, sales, installation, service, modernisation and repair of all forms of vertical / horizontal transportation systems.

ATAL
We commit. We perform. We deliver.

13/F, Island Place Tower, No. 510 King's Road, North Point, Hong Kong

Tel : (852) 2561 8278

Fax : (852) 2565 7638

Email : info@anlev.com.hk

Website : www.anlev.com.hk



BARRISOL

Stretch your imagination with Barrisol ...



Eurasia Architectural Products Limited

Room B, 6/F, Chinawall Centre, 414-424 Jaffe Road, Wanchai, Hong Kong

Tel : (852) 2793 9966 Fax : (852) 2793 9965

email : hongkong@eurasia-ap.com.hk Website : www.eurasia-ap.com.hk