

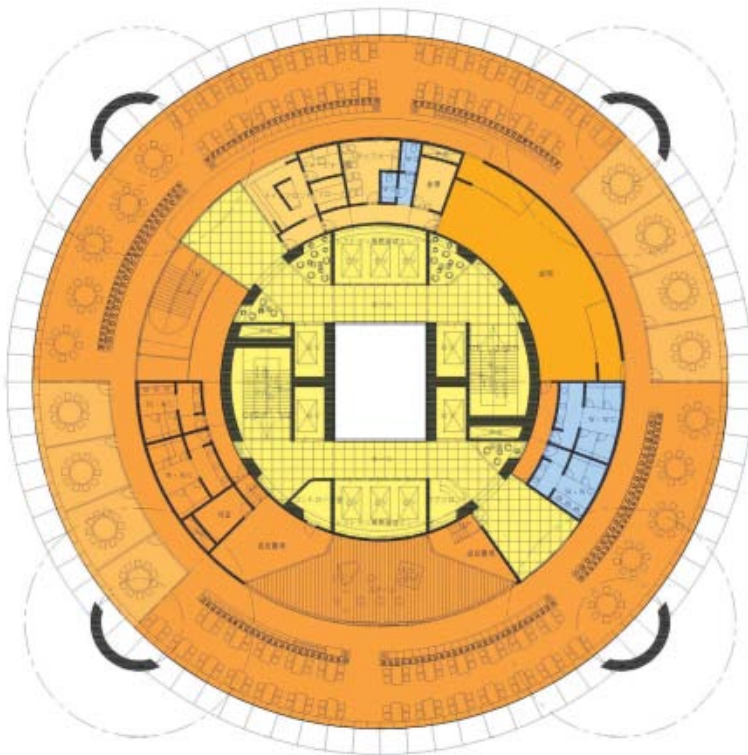
First published February 2007
Copyright © China Trend Building Press Limited
trend@building.com.hk



Shanghai EXPO Guest Hotel

Mainland China

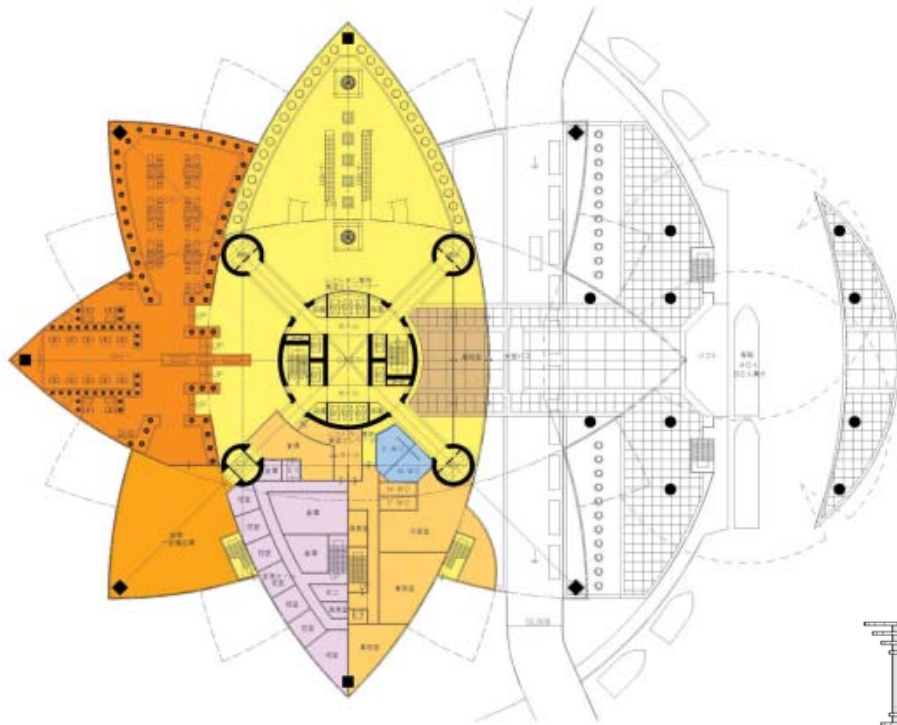




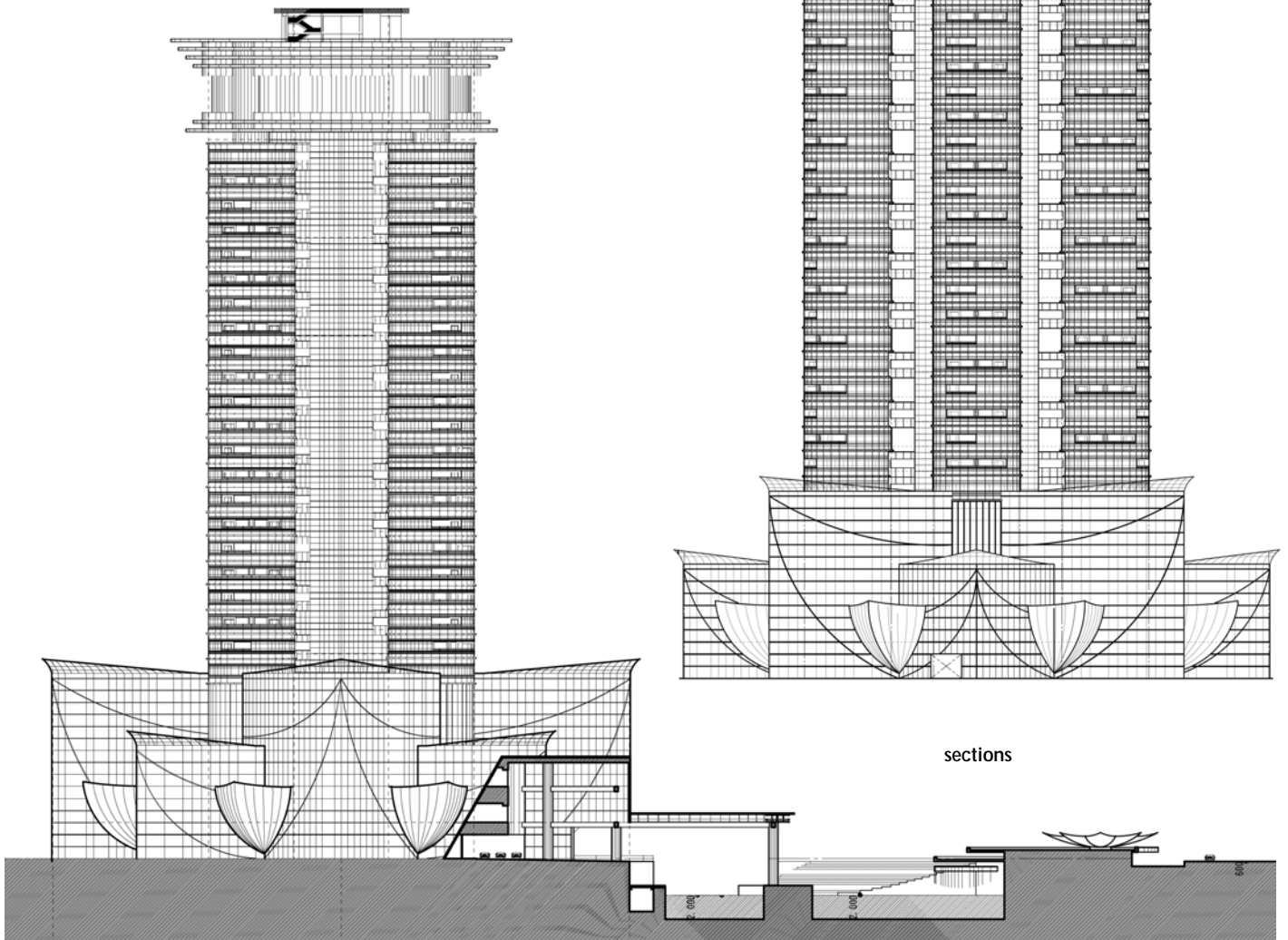
Restaurant floor

It could be stated that Shanghai is now perhaps the most economically developed city in China. It is also recognized as the most vigorous economy in the world, with the World Expo 2010 scheduled to be hosted here in Shanghai. The expected proximity is that of the sinuous Huangpu River running through the middle of Shanghai, and the east side areas of Lupu Bridge. This targeted location of the 2010 World Expo is expected to be four times larger than that of the Japanese expo.

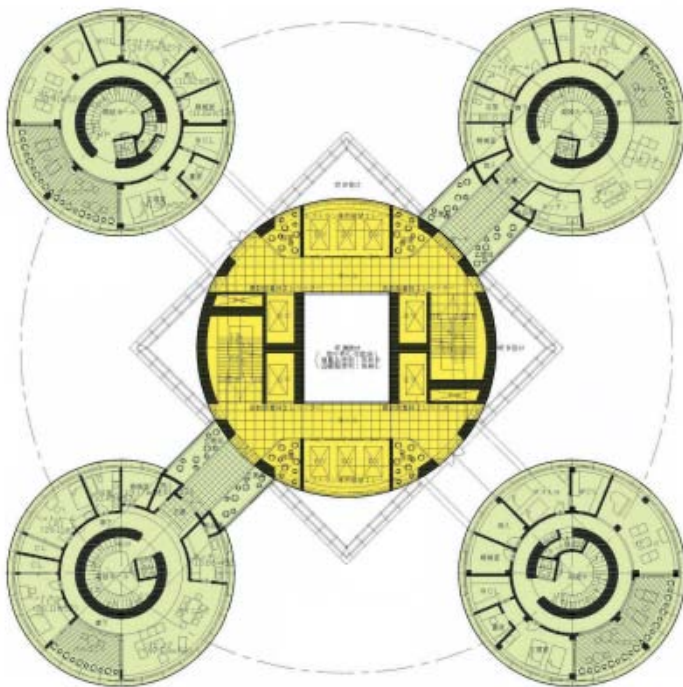
Shanghai Expo will welcome celebrities and sovereigns of all nations around the globe. During the period of guests stay, it is essential to make them feel comfortable during their visit. Therefore, an idea to create the perfect layouts in the building which has turning guest rooms, has been infused.



First floor



sections



Odd number floor plan

It features the first design patent in the world (A patent in Japan). As the guests pass through the elevator, they directly face the welcoming entrance. The front of the entrance has a passing walkway consisting of symmetric glass windows that let guests to view the expo site. Guest rooms are designed as a maisonette, which are divided into public and private areas, which offers the comfortable enjoyment as well as enjoy the magnificent view of expo. The idea of turning bedroom in the guest room creates the ability to turn and adjust the angle towards the best view. Imagine enjoying Pearl Tower as the sun rises. Imagine enjoying the romantic sunset during the evening. Imagine the neon lights during the night hours. Guests will be overwhelmed and satisfied by the picturesque scenery the city has to offer.

In order to harmonize the architecture with the surroundings, the flower imagery at the base parts of the building are designed as lotuses, which appear as if they are floating on the water.



After the Shanghai Expo, the hotel will function as a six-star hotel or be permanently used as a super lofty residential area. A comfortable and easy space is now being created on an unprecedented scale and a super lofty guest hotel is being newly-located.

architectural design
Nobuyuki Hayakawa,
 Japan Hayakawa Architectural Design

Fast Facts

- total floor area 101,468.44 sq m
- number of storey
- on the ground 30 (with small tower)
- underground 3
- height 177 m
- internal usage
- 1-6/F guesthouse facilities
- 7-28/F accommodations
- 29-30/F rotation restaurant

