

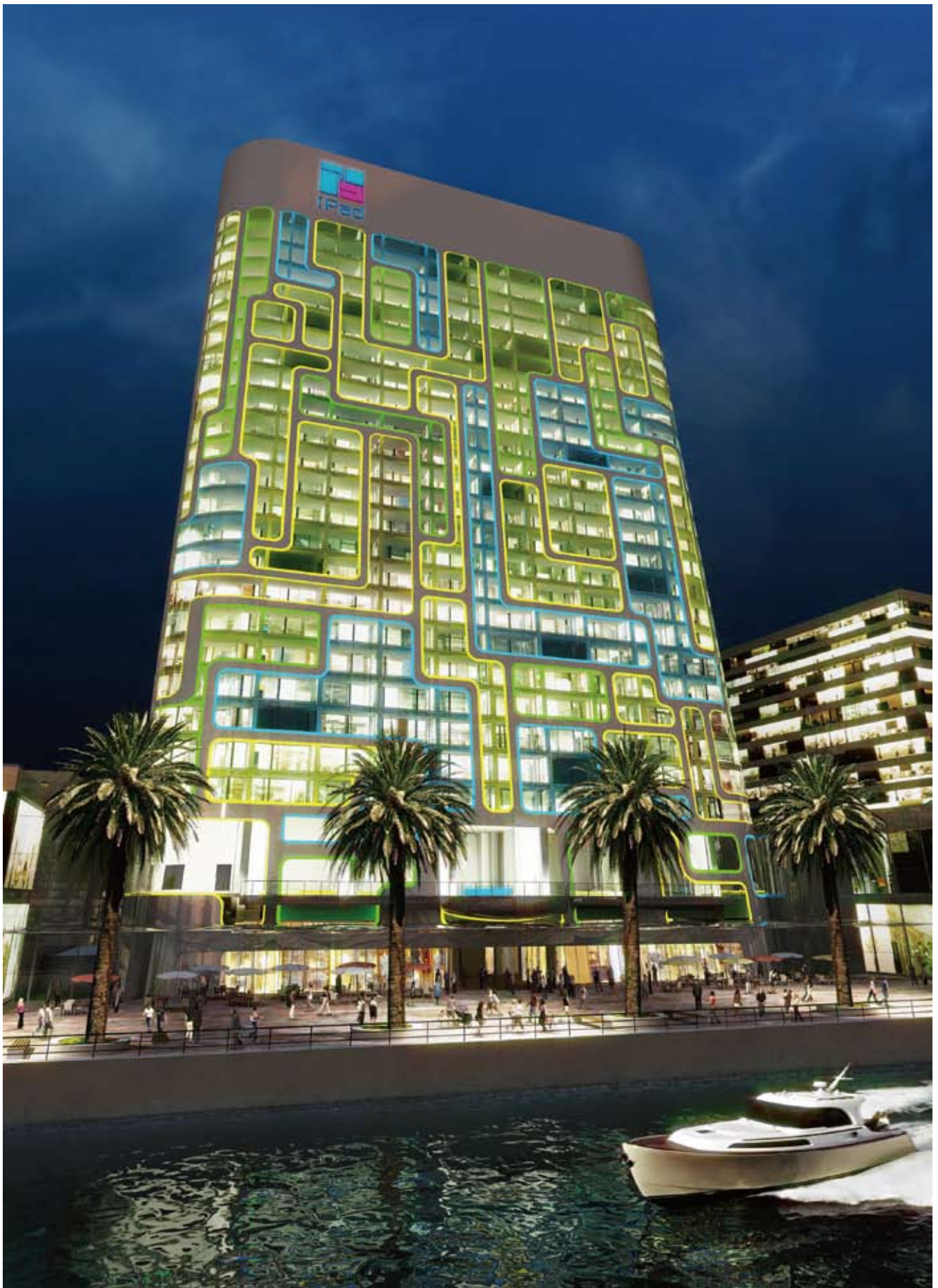


iPad Apartment Tower

Dubai

Located in Dubai's Business Bay, iPad is an advanced Cybertec-ture apartment tower and scheduled for completion in 2008. The iPad embodies the vision of Omniyat Properties where *Living the Future* is bought to life.







The iPad, with its architecture and technology designed by James Law Cybertecture International, is a piece of Cybertecture that is a symbiotic mix of technology, architecture, interior design and software.

The iPad Apartment Tower has been conceived with the vision to be an innovative residence for people with passion for life who want the most out of life and the technology that they use. Like the iPod, its digital inspiration, the iPad Apartment Tower will sit on a docking platform at an angle of six degrees. By way of comparison, the Leaning Tower of Pisa tilts at an angle of 5.5 degrees.

The iPad is a 26-storey building containing over 231 intelligent apartments with more than half looking over the picturesque Business Bay area of Dubai whilst the remaining looking towards the center piece of Dubai, the Burj Dubai tower. Within the iPad, there will be a compilation of different size apartments, ranging from studio apartments, 1 bedroom apartments, 2 bedroom apartments, studio lofts, 1 bedroom lofts and 2 bedroom lofts.

Each apartment in iPad is intelligent and has its own Cybertecture to provide a unique *Living the Future* experience. Everything from communications, entertainment, shopping is covered by the Cybertecture of the apartment. Some of the features include: iReality – linking the apartment view in real time to different locations around the world; iToggle – easily and intuitively commanding the home to function for residents; iRotation Room – a rotating living and dining room for a wonderful view of Dubai; iWalls –







can be automatically opened to create a link between rooms; iFamily – providing a seamless video link with the family, an interactive way to keep in touch; iSecurity – automatically locking and unlocking doors through RFID tags, no more need for keys; iCustomization – customize the look of the home, even the wall panels of the apartment in the common corridors. All these features are symbiotically designed by James Law Cybertecture to seamlessly integrate with the spatial design done by the same team.

In the podium of the iPad tower, will be the iSpa, a spa and clubhouse space for the exclusive use of residents as well as an outdoor iSports Arena that will include

running track, half basketball court and outdoor lap pool. The iSpa is designed around the theme of digital water, real water and digital projections will create a complex of facilities including, iMedia Jacuzzi, iUnderwater Concert, iDeck Chairs, iGym, iOxygen Bar and iSwimming Deck.

On the ground floor of the iPad will be a retail area that will be filled with restaurants and shops. These shops and restaurants are envisaged to be linked via the iPad's own network to provide services and deliveries to the apartments. They will also form iPad's contribution to the life of Business Bay along the Creek, as a vibrant promenade style entertainment strip.