

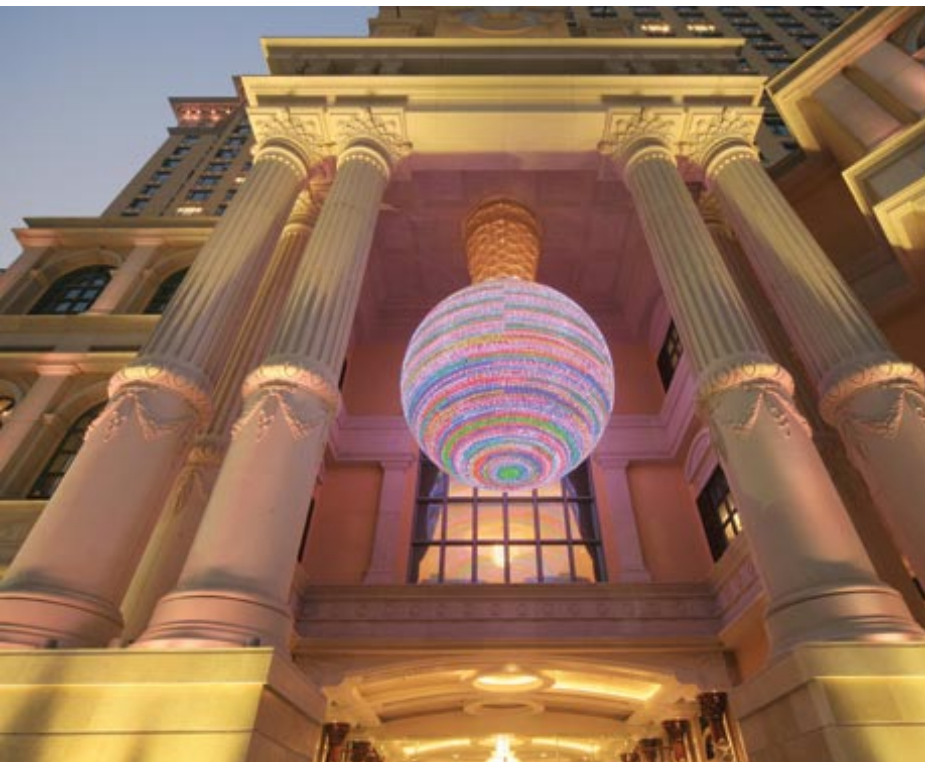
Sofitel Macau at Ponte 16

澳門索菲特十六浦酒店









Located on the waterfront of the historic quarter, elegantly reflecting the city's unique cultural heritage, Sofitel Macau at Ponte 16 strives to deliver an unrivalled experience. The hotel becomes a place where tastes and cultures are bridged in innovative ways to create a seamless blend of excellence, authenticity and beauty. The artful blending of Portuguese, Chinese and French cultures in the hotel reflects what each are renowned for: a flair for refinement, a deep rooted philosophy of gastronomy and a keen sense of balance.

The hotel strives to deliver an unrivalled guest experience in all that it offers. Its 408 luxury rooms and suites are exceptionally appointed and overlook the Inner Harbour





and the historic city. The development offers restaurants, bars, spa and wellness, swimming pools, boutiques and entertainment to create an exquisite world for hotel guests and tourists.

The guestrooms simply emanate feelings of warmth, elegance and luxury. Each bed fitted with Sofitel's renowned "MyBed", made up of crisp linen, all-feather bedding and an extra-light down duvet with the generous presence of down pillows.

The Club Rooms, Suites and Presidential Apartments of up to 225 sq m are the ultimate in style, elegance and personal comfort, with the finest in-room technology for convenience and peace of mind when travelling.

The 484 sq m of meeting and banqueting facilities include a ballroom of 290 sq m which is located at river front, enjoys an unique panoramic view of Macau's historic





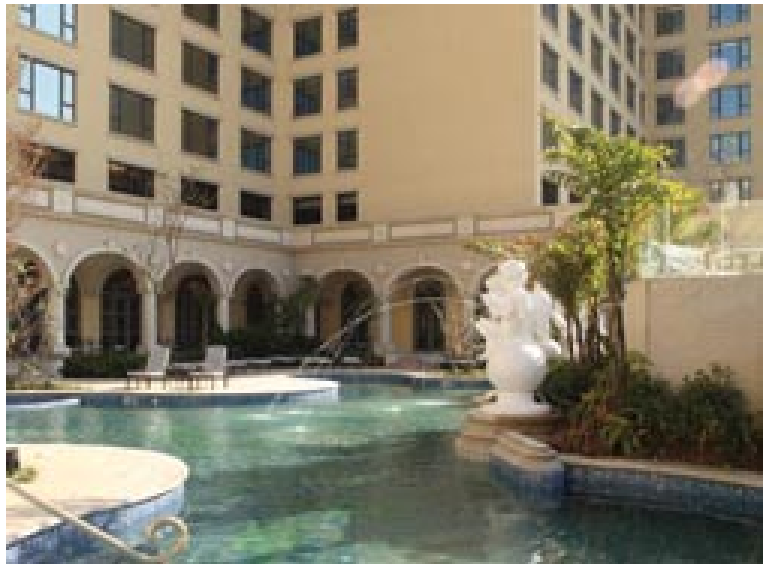


downtown and Zhuhai river view. The floor-to-ceiling window provides natural daylight and embraces the dramatic sunset as well as the city's night glitz. Outdoor terrace is excellent for social gatherings, flexible settings for all kinds of events.

Sofitel Macau at Ponte 16 develops specific solutions that combining six key elements for clients: meeting space, technology, banqueting, inside & outside activities, guestroom, and additional guest services.

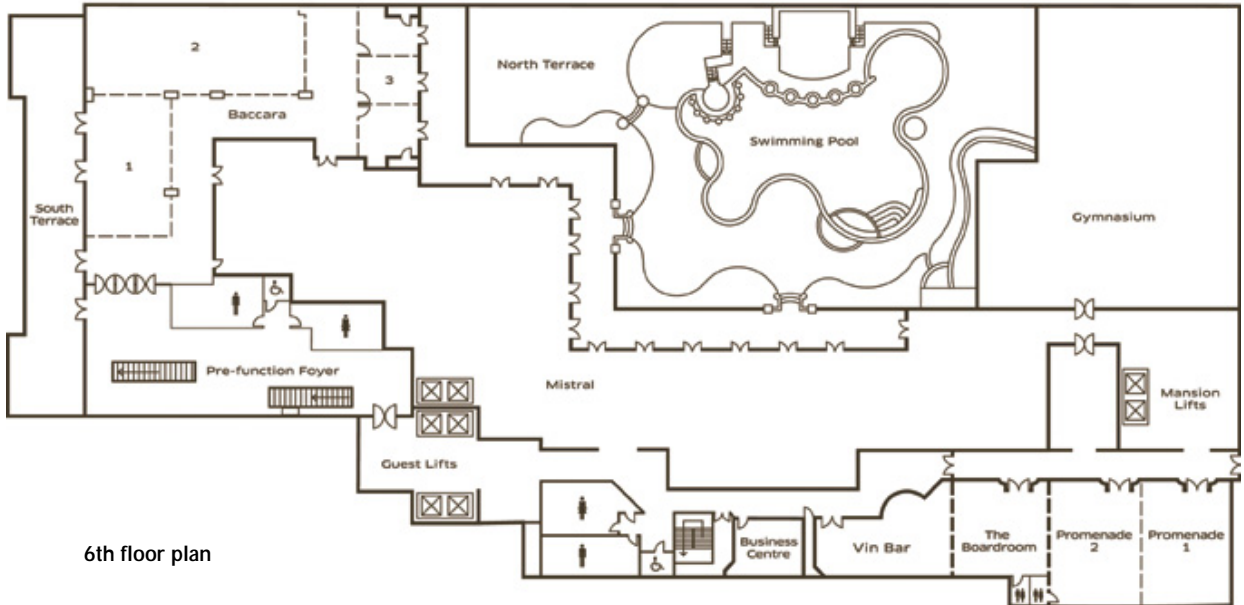
Ponte 16 is developed by Pier 16 - Property Development Ltd (a wholly owned subsidiary of Sociedade de Jogos de Macau, SA, Macau Success Ltd and Joy Idea Investments Ltd) with a total investment of approximately HK\$2.4 billion. The Jerde Partnership is responsible for the overall planning and design of the project.

owners
Sociedade de Jogos de Macau, SA
Macau Success Ltd



Fast Facts

location	Inner Harbor of Macau
accommodations	210 Deluxe Rooms 154 Club Rooms 25 Suites 19 The Mansion at Sofitel
total functions space	484 sq m
total resort area	1.3 million sq ft
area of entertainment and retail complex	500,000 sq ft
opening date of Phase I	February 2008



6th floor plan